

Overview

- Reliable intensity-based object detection
- IO-Link interface independent of the switching output (Dual Channel)
- Extended parameterization options and additional diagnostic data
- Quick mounting by means of M3 threaded bushes made of stainless steel



Picture similar



Technical data

General data		Electrical data	
Type	Intensity difference	Reverse polarity protection	Yes
Version	IO-Link dual channel	Communication interface	
Sensing distance Tw	20 ... 200 mm	Interface	IO-Link V1.1
Smallest object recognizable typ.	2 mm at 100 mm	IO-Link port type	Class A
Power on indication	LED green	Baud rate	38,4 kBaud (COM 2)
Alignment / soiled lens indicator	Flashing output indicator	Cycle time	≥ 2.7 ms
Output indicator	LED yellow	Process data length	32 Bit
Sensing distance adjustment	IO-Link	Process data structure	Bit 0 = SSC1 (presence) Bit 2 = quality Bit 3 = alarm Bit 5 = SSC4 (counter) Bit 16-31 = 16 Bit measurement
Suppression of reciprocal influence	Yes	Adjustable parameters	Switching point Time filters LED status indicators Output logic Output circuit Counter Deactivate the sensor element Find Me function Teach-in mode
Beam type	Point	Additional data	Signal strength Excess gain Operating cycles Device temperature
Alignment optical axis	< 1,5°	Mechanical data	
Light Source		Width / diameter	8 mm
Light source	Pulsed red LED	Height / length	25.1 mm
Wave length	644 nm	Depth	15.8 mm
Electrical data		Design	Rectangular
Response time / release time	< 0.4 ms	Mechanical mounting	Threaded sleeves M3 (stainless steel)
Jitter	< 0.21 ms	Housing material	Plastic (ASA, PMMA)
Voltage supply range +Vs	10 ... 30 VDC		
Current consumption max. (no load)	45 mA (@ 10 VDC)		
Current consumption typ.	16 mA (@ 24 VDC)		
Voltage drop Vd	<2 VDC		
Output function	Light / dark operate		
Output circuit	Push-pull		
Output current	50 mA		
Short circuit protection	Yes		

The product features and technical data specified do not express or imply any warranty. Technical modifications subject to change.

Technical data

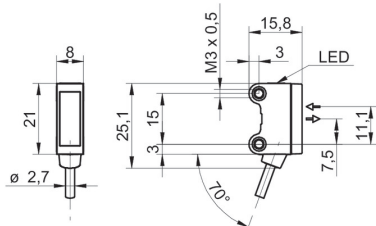
Mechanical data

Front (optics)	PMMA
Connection types	Cable 4 pin, 2 m
Cable characteristics	PVC / PVC 4 x 0.08 mm ²

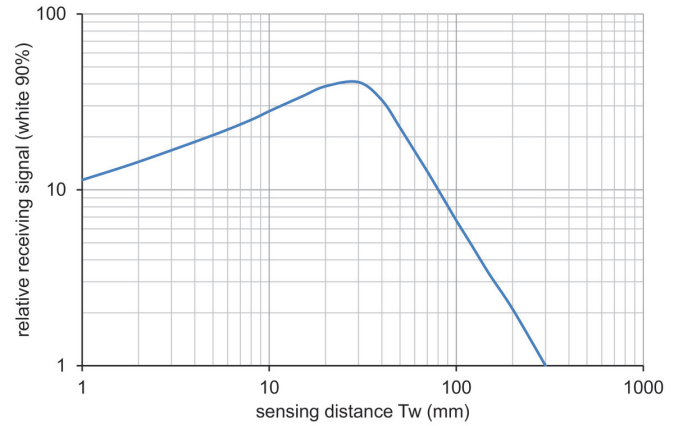
Ambient conditions

Protection class	IP 67
Operating temperature	-25 ... +50 °C

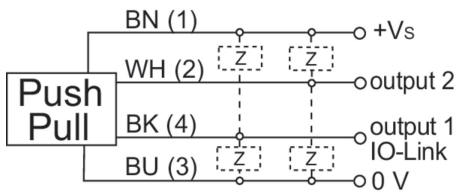
Dimension drawing



Relative receiving signal



Connection diagram



Beam characteristic (typically)

