

Overview

- Reliable intensity-based object detection
- IO-Link interface independent of the switching output (Dual Channel)
- Extended parameterization options and additional diagnostic data
- Robust housing with stainless steel spacer sleeves



Picture similar



Technical data

General data

Type	Intensity difference
Version	IO-Link dual channel
Sensing distance Tw	20 ... 200 mm
Smallest object recognizable typ.	2 mm at 100 mm
Power on indication	LED green
Alignment / soiled lens indicator	Flashing output indicator
Output indicator	LED yellow
Sensing distance adjustment	IO-Link
Suppression of reciprocal influence	Yes
Beam type	Point
Alignment optical axis	< 1,5°

Light Source

Light source	Pulsed red LED
Wave length	644 nm

Electrical data

Response time / release time	< 0.4 ms
Jitter	< 0.21 ms
Voltage supply range +Vs	10 ... 30 VDC
Current consumption max. (no load)	45 mA (@ 10 VDC)
Current consumption typ.	16 mA (@ 24 VDC)
Voltage drop Vd	<2 VDC
Output function	Light / dark operate
Output circuit	Push-pull
Output current	50 mA
Short circuit protection	Yes

Electrical data

Reverse polarity protection	Yes
-----------------------------	-----

Communication interface

Interface	IO-Link V1.1
IO-Link port type	Class A
Baud rate	38,4 kBaud (COM 2)
Cycle time	≥ 2.7 ms
Process data length	32 Bit
Process data structure	Bit 0 = SSC1 (presence) Bit 2 = quality Bit 3 = alarm Bit 5 = SSC4 (counter) Bit 16-31 = 16 Bit measurement

Adjustable parameters	Switching point Time filters LED status indicators Output logic Output circuit Counter Deactivate the sensor element Find Me function Teach-in mode
-----------------------	---

Additional data	Signal strength Excess gain Operating cycles Device temperature
-----------------	--

Mechanical data

Width / diameter	8 mm
Height / length	25.1 mm
Depth	15.8 mm
Design	Rectangular
Mechanical mounting	Sleeve smooth (stainless steel)
Housing material	Plastic (ASA, PMMA)

Technical data

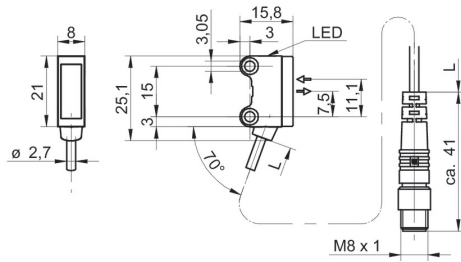
Mechanical data

Front (optics)	PMMA
Connection types	Flylead connector M8 4 pin, L=200 mm
Cable characteristics	PVC / PVC 4 x 0.08 mm ²

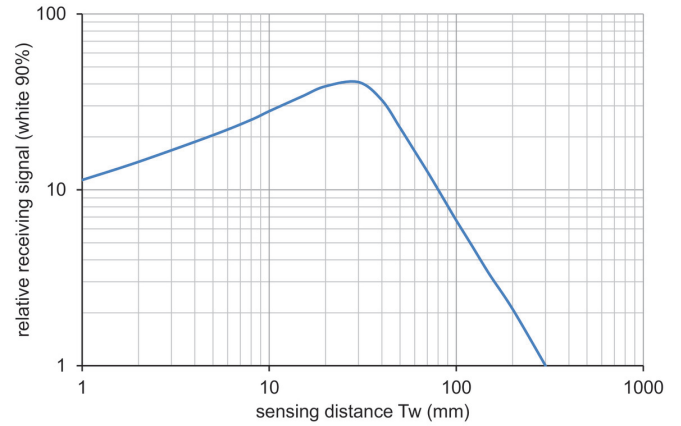
Ambient conditions

Protection class	IP 67
Operating temperature	-25 ... +50 °C

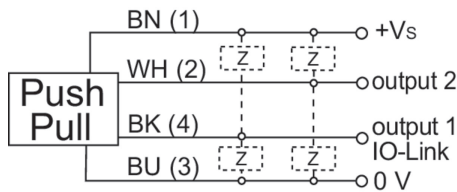
Dimension drawing



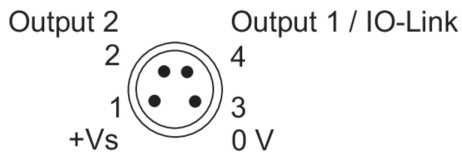
Relative receiving signal



Connection diagram



Pin assignment



Beam characteristic (typically)

