

Overview

- distance measuring
- 30 ... 250 mm
- pulsed red laser diode
- push-pull
- Teach-in and IO-Link
- cable 4 pin, 2 m
- -10 ... 60 °C
- IP 67



Picture similar



Technical data

General data

Type	Distance measuring
Version	IO-Link measuring
Measuring distance Sd	30 ... 250 mm
Focal distance	400 mm
Adjustment	Teach-in and IO-Link
Power on indication	LED green
Light indicator	LED yellow
Resolution	500 ... 10000 µm
Linearity error	± 1,5 ... 12,5 mm
Beam type	Point
Suppression of reciprocal influence	Yes
Alignment optical axis	< 2°
Temperature drift	< 0,2 % Sde/K

Light Source

Light source	Pulsed red laser diode
Wave length	656 nm
Laser class	1

Electrical data

Response time / release time	< 0,25 ms
Voltage supply range +Vs	11 ... 30 VDC
Current consumption max. (no load)	30 mA

Electrical data

Voltage drop Vd	< 2,5 VDC
Output circuit	Push-pull
Output current	< 100 mA
Short circuit protection	Yes
Reverse polarity protection	Yes

Communication interface

Interface	IO-Link V1.1
Baud rate	230,4 kBaud (COM 3)
Cycle time	≥ 0,6 ms
Process data length	3 Byte
Process data structure	Bit 0 = BDC1 Bit 2 = quality Bit 3 = alarm Bit 8-23 = 16 Bit measurement

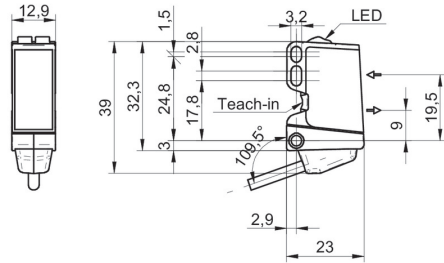
Mechanical data

Width / diameter	12,9 mm
Height / length	32,3 mm
Depth	23 mm
Type	Rectangular
Housing material	Plastic (ASA, PMMA)
Front (optics)	PMMA
Connection types	Cable 4 pin, 2 m

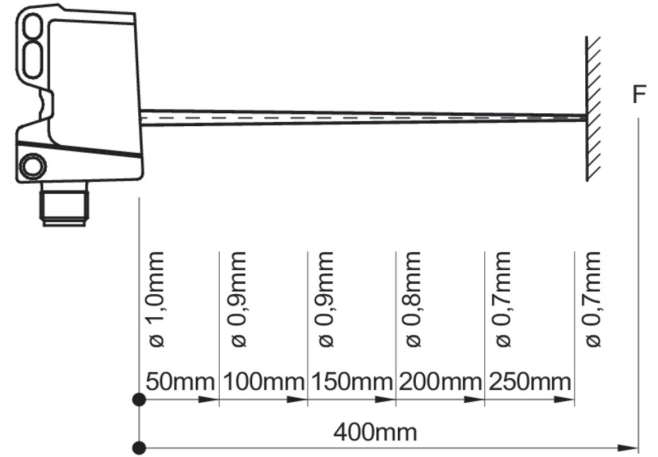
Ambient conditions

Operating temperature	-10 ... +60 °C
Protection class	IP 67

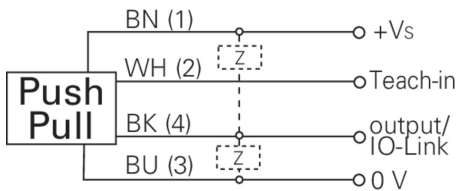
Dimension drawing



Beam characteristic (typically)



Connection diagram



Laser warning

**CLASS 1 LASER
PRODUCT**

IEC 60825-1/2014
Complies with 21 CFR 1040.10 and 1040.11 except for conformance with IEC 60825-1 Ed. 3., as described in Laser Notice No. 56, dated May 8, 2019

Resolution

