

**Overview**

- distance measuring
- 30 ... 300 mm
- pulsed PinPoint LED
- push-pull
- Teach-in and IO-Link
- cable 4 pin, 2 m
- -25 ... 60 °C
- IP 67



Picture similar



**Technical data**

**General data**

|                                     |                      |
|-------------------------------------|----------------------|
| Type                                | Distance measuring   |
| Version                             | IO-Link measuring    |
| Measuring distance Sd               | 30 ... 300 mm        |
| Adjustment                          | Teach-in and IO-Link |
| Power on indication                 | LED green            |
| Light indicator                     | LED yellow           |
| Resolution                          | 500 ... 5000 µm      |
| Linearity error                     | ± 1,5 ... 15 mm      |
| Beam type                           | Point                |
| Suppression of reciprocal influence | Yes                  |
| Alignment optical axis              | < 2°                 |
| Temperature drift                   | < 0,2 % Sde/K        |

**Light Source**

|              |                     |
|--------------|---------------------|
| Light source | Pulsed PinPoint LED |
| Wave length  | 630 nm              |

**Electrical data**

|                                    |               |
|------------------------------------|---------------|
| Response time / release time       | < 0,49 ms     |
| Voltage supply range +Vs           | 10 ... 30 VDC |
| Current consumption max. (no load) | 45 mA         |
| Voltage drop Vd                    | < 3 VDC       |

**Electrical data**

|                             |           |
|-----------------------------|-----------|
| Output circuit              | Push-pull |
| Output current              | < 100 mA  |
| Short circuit protection    | Yes       |
| Reverse polarity protection | Yes       |

**Communication interface**

|                        |   |
|------------------------|---|
| Interface              | IO-Link V1.1  |
| Baud rate              | 38,4 kBaud (COM 2)  |
| Cycle time             | ≥ 2,7 ms  |
| Process data length    | 3 Byte  |
| Process data structure | Bit 0 = BDC1<br>Bit 2 = quality<br>Bit 3 = alarm<br>Bit 8-23 = 16 Bit measurement |

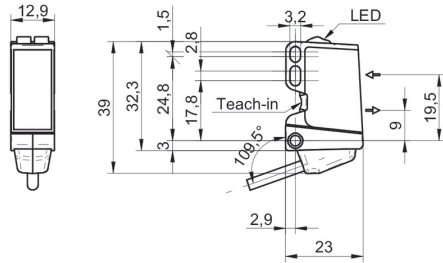
**Mechanical data**

|                  |                     |
|------------------|---------------------|
| Width / diameter | 12,9 mm             |
| Height / length  | 32,3 mm             |
| Depth            | 23 mm               |
| Type             | Rectangular         |
| Housing material | Plastic (ASA, PMMA) |
| Front (optics)   | PMMA                |
| Connection types | Cable 4 pin, 2 m    |

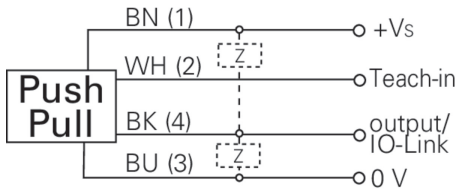
**Ambient conditions**

|                       |                |
|-----------------------|----------------|
| Operating temperature | -25 ... +60 °C |
| Protection class      | IP 67          |

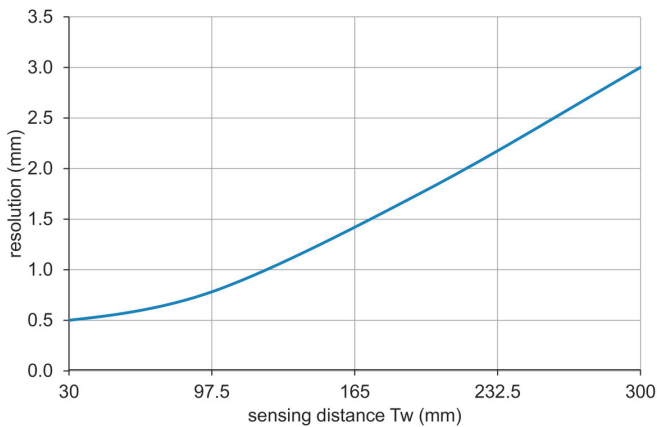
**Dimension drawing**



**Connection diagram**



**Resolution**



**Beam characteristic (typically)**

