

**Overview**

- light barrier
- 30 ... 250 mm
- pulsed red laser diode
- push-pull
- Teach-in and IO-Link
- cable 4 pin, 2 m
- -10 ... 60 °C
- IP 67



Picture similar



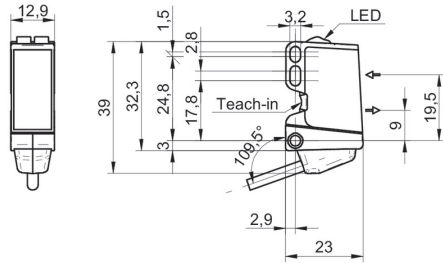
**Technical data**

General data		Electrical data	
Type	Light barrier	Current consumption max. (no load)	30 mA
Version	Standard object detection	Current consumption typ.	25 mA
Light source	Pulsed red laser diode	Voltage drop Vd	< 2,5 VDC
Background position Sde	30 ... 250 mm	Output function	Light / dark operate
Scanning range Sa	90% ... 85% Sde	Output circuit	Push-pull
Repeat accuracy	< 0,1 mm at 100 mm	Output current	< 100 mA
Power on indication	LED green	Short circuit protection	Yes
Light indicator	LED yellow	Reverse polarity protection	Yes
Sensing distance adjustment	Teach-in and IO-Link	Mechanical data	
Laser class	1	Width / diameter	12,9 mm
Distance to focus	400 mm	Height / length	32,3 mm
Wave length	656 nm	Depth	23 mm
Suppression of reciprocal influence	Yes	Type	Rectangular
Alignment optical axis	< 2°	Housing material	Plastic (ASA, PMMA)
Electrical data		Front (optics)	PMMA
Response time / release time	< 0,25 ms	Connection types	Cable 4 pin, 2 m
Voltage supply range +Vs	11 ... 30 VDC	Ambient conditions	
		Operating temperature	-10 ... +60 °C
		Protection class	IP 67

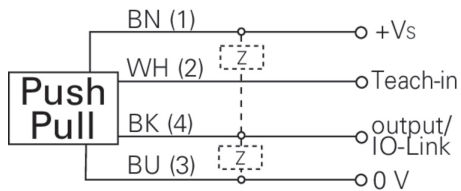
**Remarks**

- qTeach
- IO-Link: V1.1, filter functions, qTeach lock adjustable

**Dimension drawing**



**Connection diagram**



**Laser warning**

**CLASS 1 LASER  
PRODUCT**

IEC 60825-1/2014  
Complies with 21 CFR 1040.10 and  
1040.11 except for conformance with  
IEC 60825-1 Ed. 3., as described in  
Laser Notice No. 56, dated May 8, 2019

**Beam characteristic (typically)**

