

Technical data sheet

Rotary encoder

Part no.: 50139581

EI 1058-S08x20C-1024T-M23A

Contents

- Technical data
- Dimensioned drawings
- Electrical connection

Figure can vary



Technical data

Basic data

| | |
|--------|----------------------------|
| Series | EI 1xxx |
| Type | Incremental rotary encoder |

Measurement data

| | |
|----------------------|-------------|
| Max. operating speed | 6,000 r/min |
| Resolution | 1,024 p/r |

Electrical data

| | |
|--------------------|---|
| Protective circuit | Polarity reversal protection Short circuit protected |
|--------------------|---|

Performance data

| | |
|----------------------|----------------|
| Supply voltage U_B | 5 ... 28 V, DC |
| Open-circuit current | 0 ... 150 mA |

Time behavior

| | |
|---------------------|------------|
| Switching frequency | 300,000 Hz |
|---------------------|------------|

Interface

| | |
|------|-----|
| Type | TTL |
|------|-----|

Connection

| | |
|-----------------------|------------|
| Number of connections | 1 Piece(s) |
|-----------------------|------------|

Connection 1

| | |
|--------------------|------------------------------|
| Function | Signal OUT Voltage supply |
| Type of connection | Connector |
| Thread size | M23 |
| Type | Male |
| Material | Metal |
| No. of pins | 12 -pin |
| Plug outlet | Axial |

Mechanical data

| | |
|------------------|-----------------|
| Housing material | Metal |
| Metal housing | Aluminum |
| Flange type | Clamping flange |

Shaft

| | |
|--------------------------------|---------|
| Design | Shaft |
| Dimension (\varnothing x L) | 8 mm |
| Dimension (\varnothing x L) | 20 mm |
| Start-up torque | 0.5 N·m |
| Shaft load - axial | 60 N |
| Shaft load - radial | 120 N |

Environmental data

| | |
|--------------------------------|---------------|
| Ambient temperature, operation | -40 ... 70 °C |
| Ambient temperature, storage | -40 ... 70 °C |

Certifications

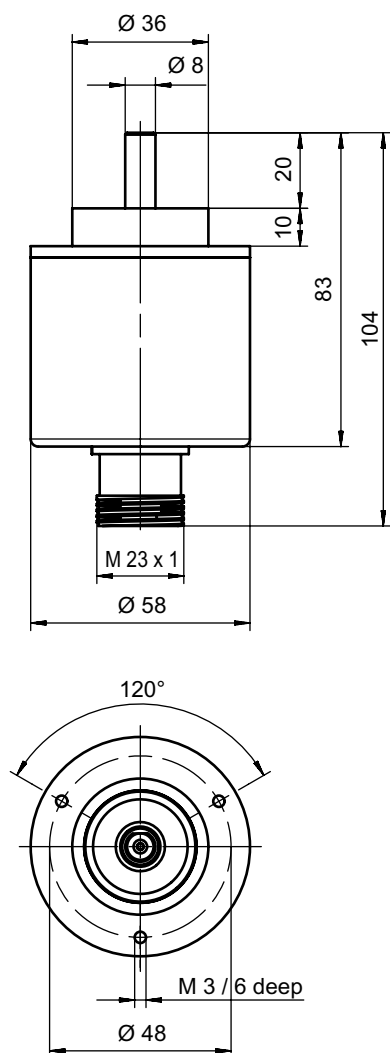
| | |
|--|---|
| Degree of protection | IP 65 |
| Standards applied | IEC 61000-6-2:2016, IEC 61000-6-4:2016 + A1 |
| Test procedure for vibration in accordance with standard | 10g IEC 68-2-6 (10...2000 Hz) |

Classification

| | |
|--------------|----------|
| ECLASS 5.1.4 | 27270501 |
| ECLASS 8.0 | 27270501 |
| ECLASS 9.0 | 27270501 |
| ECLASS 10.0 | 27270501 |
| ECLASS 11.0 | 27270501 |
| ECLASS 12.0 | 27270501 |
| ECLASS 13.0 | 27270501 |
| ETIM 5.0 | EC001486 |
| ETIM 6.0 | EC001486 |
| ETIM 7.0 | EC001486 |
| ETIM 8.0 | EC001486 |

Dimensioned drawings

All dimensions in millimeters



Electrical connection

Connection 1

| | |
|--------------------|----------------|
| Function | Signal OUT |
| | Voltage supply |
| Type of connection | Connector |
| Thread size | M23 |
| Type | Male |
| Material | Metal |
| No. of pins | 12 -pin |
| Plug outlet | Axial |

Pin Pin assignment

| | |
|---|------------|
| 1 | B inverted |
| 2 | n.c. |
| 3 | Z |
| 4 | Z inverted |
| 5 | A |

Electrical connection

| Pin | Pin assignment |
|-----|----------------|
| 6 | A inverted |
| 7 | n.c. |
| 8 | B |
| 9 | FE/SHIELD |
| 10 | GND |
| 11 | n.c. |
| 12 | V+ |