

Solenoid Driver

KCD2-SLD-Ex1.1245

SIL 3

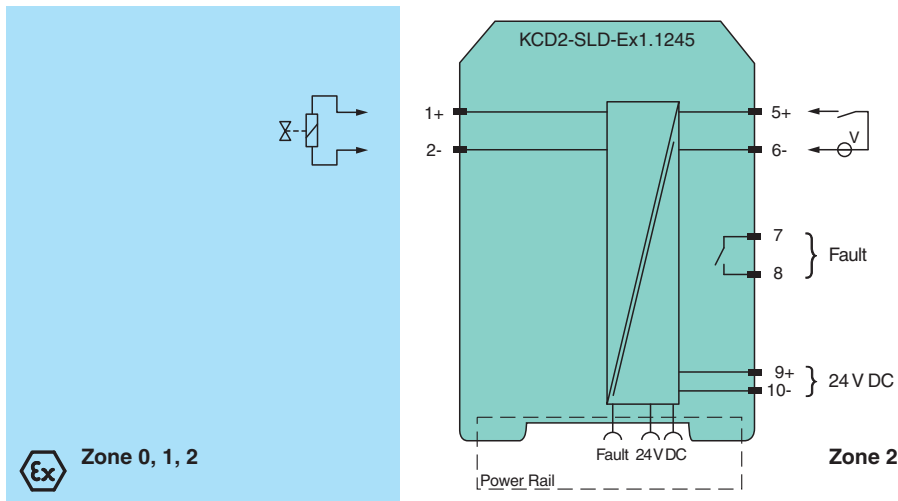
- 1-channel isolated barrier
- 24 V DC supply (bus or loop powered)
- Output 45 mA at 12 V DC
- Line fault transparency (LFT)
- Test pulse immunity
- Housing width 12.5 mm
- Up to SIL 3 acc. to IEC 61508



Function

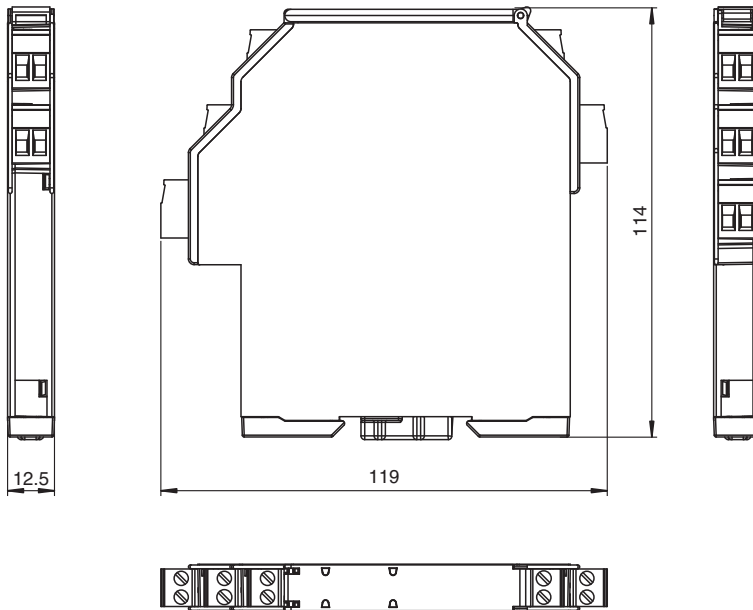
This isolated barrier is used for intrinsic safety applications. It supplies power to solenoids, LEDs and audible alarms located in a hazardous area. The device is controlled with a loop powered signal or a bus powered logic signal. The device is immune to the test pulses of various control systems. The device simulates a minimum load at the input. The minimum load can be activated and de-activated. The line fault transparency function can display a line fault in the field by a change in impedance at the switching input of the solenoid driver. A line fault is indicated by a red LED and output via the fault indication output or a switch contact.

Connection



Release date: 2020-09-23 Date of issue: 2020-09-23 Filename: 243734_eng.pdf

Dimensions



Technical Data

General specifications

Signal type	Digital Output
-------------	----------------

Functional safety related parameters

Safety Integrity Level (SIL)	SIL 3
------------------------------	-------

Supply

Connection	terminals 5+, 6- loop powered Power Rail or terminals 9+, 10- bus powered
Rated voltage	U_r 19 ... 30 V DC loop powered
Input current	75 mA at 24 V , 270 Ω load
Power dissipation	1.3 W at 24 V , 270 Ω load

Input

Connection side	control side
Connection	terminals 5+, 6-
Test pulse length	max. 2 ms from DO card
Signal level	loop powered 1-signal: 19 ... 30 V DC 0-signal: 0 ... 5 V DC bus powered 1-signal: 15 ... 30 V DC (current limited at 5 mA) 0-signal: 0 ... 5 V DC
Rated current	I_r 0-signal: typ. 1.6 mA at 1.5 V DC; typ. 8 mA at 3 V DC (maximum leakage current DO card) 1-signal: \geq 36 mA (minimum load current DO card)
Inrush current	< 200 mA , 10 ms loop powered

Output

Connection side	field side
Connection	terminals 1+, 2-
Internal resistor	R_i 240 Ω
Current	I_e typ. 45 mA
Voltage	U_e typ. 12 V
Current limit	I_{max} 50 mA
Open loop voltage	U_s typ. 24.6 V

Release date: 2020-09-23 Date of issue: 2020-09-23 Filename: 243734_eng.pdf

Refer to "General Notes Relating to Pepperl+Fuchs Product Information".

Technical Data

Load		nominal 0.05 ... 18 k Ω
Output II		fault signal
Connection		terminals 7, 8, non-intrinsically safe
Contact loading		30 V DC/ 0.5 A resistive load
Mechanical life		10 ⁵ switching cycles
Energized/De-energized delay		≤ 20 ms / ≤ 20 ms
Line fault detection		signal at short-circuit $R_B < 25 \Omega$, lead breakage $R_B > 50 \text{ k}\Omega$; test current $< 500 \mu\text{A}$
Galvanic isolation		
Output/other circuits		basic insulation according to IEC/EN 61010-1, rated insulation voltage 300 V _{eff}
Output II/power supply		basic insulation according to IEC/EN 61010-1, rated insulation voltage 32 V _{eff}
Indicators/settings		
Display elements		LEDs
Control elements		DIP-switch
Configuration		via DIP switches
Labeling		space for labeling at the front
Directive conformity		
Electromagnetic compatibility		
Directive 2014/30/EU		EN 61326-1:2013 (industrial locations)
Conformity		
Electromagnetic compatibility		NE 21:2012, EN 61326-3-2:2008 For further information see system description.
Degree of protection		IEC 60529:2013
Protection against electrical shock		EN 61010-1:2010
Ambient conditions		
Ambient temperature		-20 ... 60 °C (-4 ... 140 °F)
Mechanical specifications		
Degree of protection		IP20
Connection		screw terminals
Mass		approx. 150 g
Dimensions		12.5 x 114 x 119 mm (0.5 x 4.5 x 4.7 inch), housing type A2
Mounting		on 35 mm DIN mounting rail acc. to EN 60715:2001
Data for application in connection with hazardous areas		
EU-Type Examination Certificate		EXA 17 ATEX 0002 X
Marking		⊕ II 3(1)G Ex nC ec [ia Ga] IIC T4 Gc ⊕ II (1)D [Ex ia Da] IIC ⊕ I (M1) [Ex ia Ma] I
Output I		Ex ia
Voltage	U _o	26 V
Current	I _o	110 mA
Power	P _o	715 mW
Supply		
Maximum safe voltage	U _m	60 V (Attention! The rated voltage can be lower.)
Input		
Maximum safe voltage	U _m	60 V (Attention! The rated voltage can be lower.)
Collective error message		
Maximum safe voltage	U _m	60 V (Attention! The rated voltage can be lower.)
Galvanic isolation		
Output I/other circuits		safe electrical isolation acc. to IEC/EN 60079-11, rated insulation voltage 300 V _{rms}
Directive conformity		
Directive 2014/34/EU		EN 60079-0:2012+A11:2013, EN 60079-7:2015, EN 60079-11:2012, EN 60079-15:2010
International approvals		
UL approval		E106378
Control drawing		116-0448 (cULus)

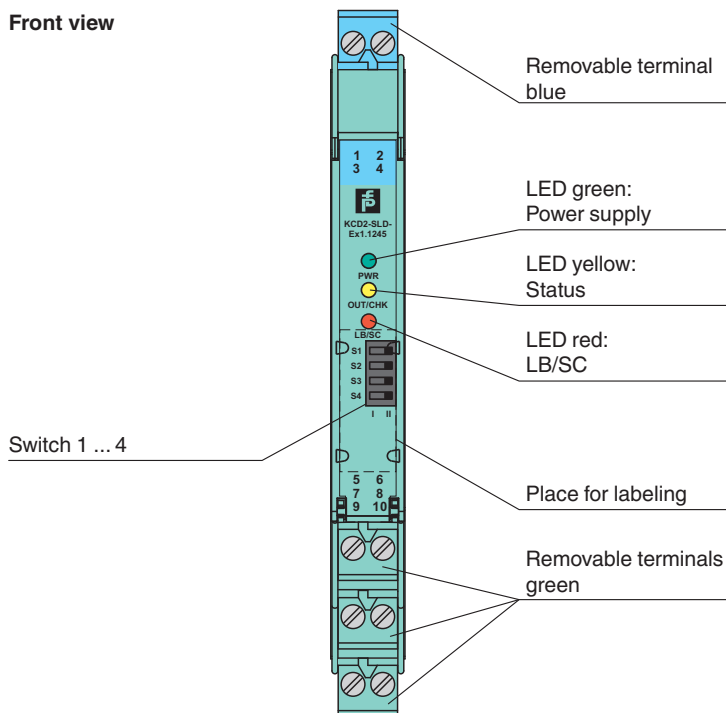
Release date: 2020-09-23 Date of issue: 2020-09-23 Filename: 243734_eng.pdf

Technical Data

IECEX approval	
IECEX certificate	IECEX EXA 17.0001X
IECEX marking	Ex nC ec [ia Ga] IIC T4 Gc [Ex ia Da] IIC [Ex ia Ma] I
General information	
Supplementary information	Observe the certificates, declarations of conformity, instruction manuals, and manuals where applicable. For information see www.pepperl-fuchs.com .
Accessories	
Optional accessories	- power feed module KFD2-EB2(.R4A.B)(.SP) - universal power rail UPR-03(-M)(-S) - profile rail K-DUCT-BU(-UPR-03)

Assembly

Front view



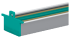


Accessories

	KFD2-EB2	Power Feed Module
	KFD2-EB2.R4A.B	Power feed module, redundant supply
	KFD2-EB2.R4A.B.SP	Power feed module with spring terminals, redundant supply
	KFD2-EB2.SP	Power feed module with spring terminals
	UPR-03	Universal Power Rail with end caps and cover, 3 conductors, length: 2 m
	UPR-03-M	Universal Power Rail with end caps and cover, 3 conductors, length: 1,6 m

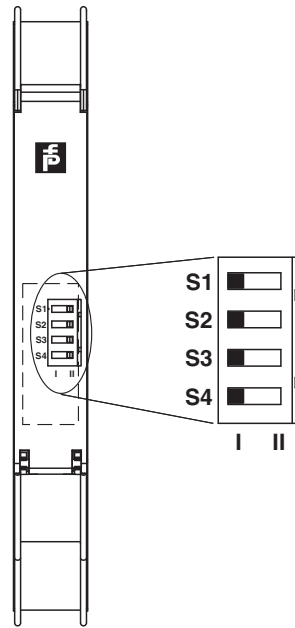
Release date: 2020-09-23 Date of issue: 2020-09-23 Filename: 243734_eng.pdf

Refer to "General Notes Relating to Pepperl+Fuchs Product Information".

Accessories

	UPR-03-S	Universal Power Rail with end caps and cover, 3 conductors, length: 0.8 m
	K-DUCT-BU	
	K-DUCT-BU-UPR-03	Profile rail with UPR-03- * insert, 3 conductors, wiring comb field side blue

Configuration



Switch settings

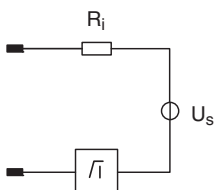
Switch	Function		Position
S1	Line fault detection	enabled	I
		disabled	II
S2	Mode of operation	loop powered	I
		bus powered with logic input	II
S3	Minimum load	enabled	I
		disabled	II
S4	No function		

Factory setting: line fault detection enabled, operating mode loop powered, minimum load enabled

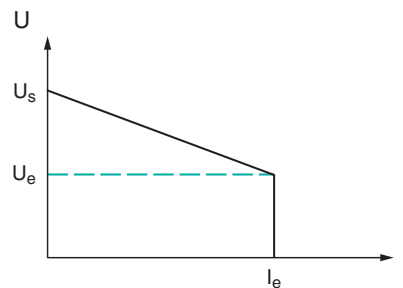
Characteristic Curve

Output characteristics

Output circuit diagram



Output characteristic



Release date: 2020-09-23 Date of issue: 2020-09-23 Filename: 243734_eng.pdf

Refer to "General Notes Relating to Pepperl+Fuchs Product Information".