

AV 25RX30U 45 GR. N

- right-hand model
- Metal enclosure
- Fail-safe locking system
- for 2-leaf doors
- authorised for use in passenger elevators
- Manual release by means of M5 triangular key

Data

Ordering data

Product type description	AV 25RX30U 45 GR. N
Article number (order number)	101081847
EAN (European Article Number)	4030661006680
eCl@ss number, version 12.0	27-27-26-03
eCl@ss number, version 11.0	27-27-26-03
eCl@ss number, version 9.0	27-27-26-03
ETIM number, version 7.0	EC002593
ETIM number, version 6.0	EC002593

Approvals - Standards

Certificates	TÜV CCC
--------------	------------

General data

Standards	EN 81-20 EN 81-50
Housing material	Light alloy die-casting
Material of the latching bolt	Brass
Gross weight	1,473 g

General data - Features

Manual release	Yes
With fail-safe locking system (Y/N)	Yes
Safety functions	Yes
Number of door leafs	2
Number of safety contacts	2

Mechanical data

Actuating element	Pull strap
Orientation / Alignment	right-hand model
Mounting	rear-side mounting holes
Permanent magnet	Ceramic oxide magnets with high coercive field strength

Mechanical data - Connection technique

Cable entry	without cable gland
-------------	---------------------

Mechanical data - Dimensions

Width	285 mm
Height	80 mm
Depth	36 mm

Diameter of the latching bolt	18 mm
X-dimension of the latching bolt	30 mm
Note (X-dimension of the latching bolt)	The entire locking bolt length results from the prescribed insertion depth of the locking bolt into the door leaf of 21 mm and dimension X. Dimension X represents the distance between the bottom of the enclosure of the door closing device and the top of the door.
Latching bolt bevelling, bottom	45 °

Ambient conditions

Degree of protection	IP20
Ambient temperature	-15 ... +70 °C

Ambient conditions - Insulation values

Rated insulation voltage U_i	400 VAC
Rated impulse withstand voltage U_{imp}	6 kV

Electrical data

Thermal test current	10 A
Utilisation category AC-15	230 VAC
Utilisation category AC-15	2 A
Utilisation category DC-13	200 VDC
Utilisation category DC-13	2 A
Switching element	Opener (NC)
Switching principle	Slow action
Material of the contacts, electrical	Silver

Note

Note (Manual release) For manual release using M5 triangular key, available as accessory

Ordering code

Product type description:
AV 25(1)K(2)U-GB215

(1)

L	left-hand model
R	right-hand model

(2)

X11,5	X-dimension of the latching bolt = 11,5 mm
X20	X-dimension of the latching bolt = 20 mm
X30	X-dimension of the latching bolt = 30 mm
X40	X-dimension of the latching bolt = 40 mm
X45	X-dimension of the latching bolt = 45 mm

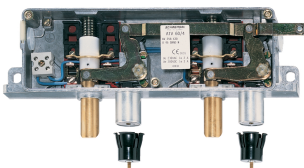
Note:

U = interlock bevel on the underside
GB215 = additional, front-side M8 mounting holes

Variants that differ from this are special versions.
Availability on request.

Pictures

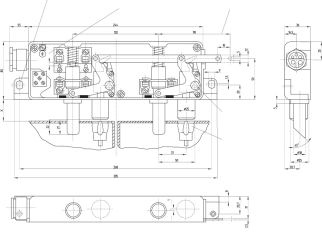
Product picture (catalogue individual photo)



ID: kav25f01

| 455.3 kB | .jpg | 352.778 x 200.025 mm - 1000 x 567 px - 72 dpi
| 30.7 kB | .png | 74.083 x 41.981 mm - 210 x 119 px - 72 dpi
| 54.8 kB | .jpg | 123.472 x 69.85 mm - 350 x 198 px - 72 dpi

Dimensional drawing basic component



ID: kav25g01

| 71.4 kB | .cdr |

| 6.6 kB | .png | 74.083 x 52.564 mm - 210 x 149 px - 72 dpi

| 189.8 kB | .jpg | 352.778 x 250.472 mm - 1000 x 710 px - 72 dpi

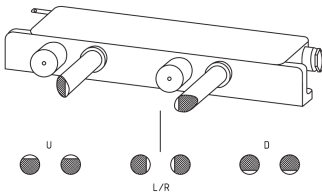
Assembly example



ID: kav--m03

| 23.5 kB | .cdr |

Images (miscellaneous)



ID: kav25m01

| 115.2 kB | .jpg | 352.778 x 206.022 mm - 1000 x 584 px - 72 dpi

Schmersal India Pvt. Ltd., Plot No - G-7/1, Ranjangaon MIDC, Tal. - Shirur, Dist.- Pune 412 220

The details and data referred to have been carefully checked. Images may diverge from original. Further technical data can be found in the manual. Technical amendments and errors possible.

Generated on: 16/09/2024, 5:34 am