



BN 31-RZ-1978-2

- 1 Reed contacts
- Non-contact principle
- Actuation from side
- Flat design
- Actuating surface and direction of actuation marked by switch symbol
- 88 mm x 25 mm x 13 mm
- Thermoplastic enclosure
- Actuating distance up to 60 mm depending on actuating magnet and version
- 2 reed contacts

Data

Ordering data

Product type description	BN 31-RZ-1978-2
Article number (order number)	101127663
EAN (European Article Number)	4030661024882
eCl@ss number, version 12.0	27-27-43-02
eCl@ss number, version 11.0	27-27-01-05
eCl@ss number, version 9.0	27-27-01-05
ETIM number, version 7.0	EC002544
ETIM number, version 6.0	EC002544

General data

Working principle	Magnetic drive
Housing construction form	rectangular
Housing material	Glass-fibre, reinforced thermoplastic
Gross weight	22 g

General data - Features

Latching	Yes
Suitable for elevators	Yes
Number of snap-in contacts	1

Mechanical data

Actuating element	Magnet
Mechanical life, minimum	1,000,000,000 Operations
Actuating speed, maximum	18 m/s
Mounting	Enclosure with mounting slots

Mechanical data - Switching distances according EN IEC 60947-5-3

Note (Switching distance S_n)	Actuating distance up to 60 mm depending on actuating magnet and version. The specified switching distances are applicable for the actuation of individually mounted components without ferromagnetic influence. A change of the distance, either positive or negative, is possible due to ferromagnetic influences. The mutual interference between multiple actuating magnets must be observed.
Repeat accuracy R	0.3 mm

Mechanical data - Connection technique

Termination	Connector M8
Wire cross-section	0.75 mm ²
Wire cross-section	18 AWG
Material of the Cable mantle	H03VV-F

Mechanical data - Dimensions

Length of sensor	13 mm
Width of sensor	88 mm
Height of sensor	25 mm

Ambient conditions

Degree of protection	IP67
Ambient temperature	-25 ... +75 °C
Resistance to vibrations	10 ... 55 Hz, amplitude 1 mm
Resistance to shock	30 g / 11 ms

Electrical data

Switching current, maximum	3 A
Switching capacity, maximum	80 W

Electrical data - Digital Output

Design of control elements	Reed contacts
----------------------------	---------------

Scope of delivery

Scope of delivery	Actuator must be ordered separately.
-------------------	--------------------------------------

Accessory

Recommendation (actuator)	BP 10 S
	2x BP 10 S
	BP 15 S
	BP 34 S
	BP 20 S
	BP 31 S
	BP 11 S
	2x BP 11 S
	BP 12 S
	BP 21 S
	2x BP 21 S
	BP 10 N
	2x BP 10 N
	BP 15 N
	2 x BP 15/2 N
	2x BP 15/2 S
	BP 34 N
	BP 20 N
	BP 31 N
	BP 11 N

Note

Note (General)

The opening and closing functions depend on the direction of actuation, the actuating magnets and the polarity of the actuating magnets.
 When the switches and actuators come together, the colours must coincide: Red (S) to red (S) and green (N) to green (N). This does not apply to the bistable contact.
 The switch is to be mounted on iron with a non-magnetic layer of at least 20 mm.

Pictures

Product picture (catalogue individual photo)

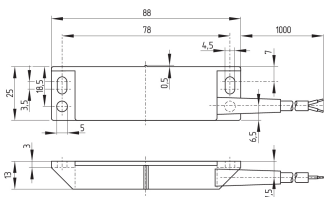


ID: kbn31f03

| 97.9 kB | .jpg | 352.778 x 97.719 mm - 1000 x 277 px - 72 dpi

| 12.8 kB | .png | 74.083 x 20.461 mm - 210 x 58 px - 72 dpi

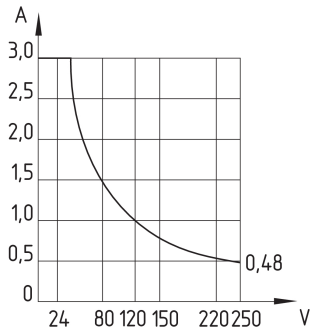
Dimensional drawing basic component



ID: kbn31g05

| 97.4 kB | .jpg | 352.778 x 210.608 mm - 1000 x 597 px - 72 dpi

Characteristic curve



ID: kbn32d03

| 3.1 kB | .png | 73.731 x 77.964 mm - 209 x 221 px - 72 dpi

| 116.4 kB | .jpg | 352.425 x 371.828 mm - 999 x 1054 px - 72 dpi

Schmersal India Pvt. Ltd., Plot No - G-7/1, Ranjangaon MIDC, Tal. - Shirur, Dist.- Pune 412 220

The details and data referred to have been carefully checked. Images may diverge from original. Further technical data can be found in the manual. Technical amendments and errors possible.

Generated on: 22/08/2024, 1:57 pm