



BN 325-R-1389

- Flat plug-in connector 6.3 mm and 2 shielding plates
- Non-contact principle
- 1 Reed kontakts
- Long life
- Actuating surface and direction of actuation marked by switch symbol
- 85 mm x 26 mm x 24 mm
- Thermoplastic enclosure
- Spade connector

Data

Ordering data

Product type description	BN 325-R-1389
Article number (order number)	101147103
EAN (European Article Number)	4030661512303
eCl@ss number, version 12.0	27-27-43-02
eCl@ss number, version 11.0	27-27-01-05
eCl@ss number, version 9.0	27-27-01-05
ETIM number, version 7.0	EC002544
ETIM number, version 6.0	EC002544

General data

Working principle	Magnetic drive
Housing construction form	rectangular
Housing material	Glass-fibre, reinforced thermoplastic
Gross weight	44 g

General data - Features

Latching	Yes
Number of snap-in contacts	1

Mechanical data

Actuating panels	lateral
Active area	lateral
Actuating element	Magnet
Mechanical life, minimum	1,000,000,000 Operations
Actuating speed, maximum	18 m/s
Mounting	rear with 2 threaded bolts

Mechanical data - Switching distances according EN IEC 60947-5-3

Switching distance S_n	5 mm ... 55 mm
	2 x BP 21S = 20 ... 55 mm
	BP 34S = 10 ... 25 mm
	BE 20 = 20 mm
	BP 10N = 10 mm
	BP 10S = 10 mm
	2 x BP 10N = 15 mm
	2 x BP 10S = 15 mm
	BP 15N = 12 mm
	BP 15S = 12 mm
	2 x BP 15/2N = 17 mm
	2 x BP 15/2S = 17mm
	BP 34N = 10 ... 25mm
	BP 20N = 5 ... 20 mm
	BP 20S = 5 ... 20 mm
	BP 31N = 5 ... 20 mm
	BP 31S = 5 ... 20 mm
	BP 11N = 10 mm
	BP 11S = 10 mm
	2 x BP 11N = 20 mm
	2 x BP 11S = 20 mm
	BP 12N = 15 mm
	BP 12S = 15 mm
	2 x BP 12N = 10 ... 25 mm
	2 x BP 12S = 10 ... 25 mm
	BP 21N = 15 ... 40 mm
	BP 21S = 15 ... 40 mm
	2 x BP 21N = 20 ... 55 mm
	BE 20N = 15 mm
	BE 20S = 15 mm

Note (Switching distance S_n) Actuating distance up to 55 mm depending on version and actuating magnet

Repeat accuracy R 0.3 mm

Mechanical data - Connection technique

Termination Flat plug-in connector 6.3 mm and 2 Shielding plates

Mechanical data - Dimensions

Length of sensor	24 mm
Width of sensor	85 mm
Height of sensor	26 mm

Ambient conditions

Degree of protection	IP40
Ambient temperature	-25 ... +70 °C
Resistance to vibrations	10 ... 55 Hz, amplitude 1 mm
Resistance to shock	50 g / 11 ms

Electrical data

Switching voltage, maximum	250 VAC
Switching current, maximum	3 A
Switching capacity, maximum	120 W
Switching capacity, maximum	120 VA
Switching element	bistable contact
Bounce duration, minimum	0.3 ms
Bounce duration, maximum	0.6 ms
Maximum switching frequency	1,080,000 /h

Electrical data - Digital Output

Design of control elements	Reed contacts
----------------------------	---------------

Scope of delivery

Scope of delivery	Actuator must be ordered separately.
-------------------	--------------------------------------

Accessory

Recommendation (actuator) BP 10 S
2x BP 10 S
BP 15 S
BP 34 S
BP 20 S
BP 31 S
BP 11 S
2x BP 11 S
BP 12 S
BP 21 S
2x BP 21 S
BP 10 N
2x BP 10 N
BP 15 N
2 x BP 15/2 N
2x BP 15/2 S
BP 34 N
BP 20 N
BP 31 N
BP 11 N
2x BP 11 N
BP 12 N
2x BP 12 N
2x BP 12 S
BP 21 N
2x BP 21 N
BE 20
BE 20 N(S) ST 24VDC
BE 20 N(S) 48VDC

Note

Note (General)

The opening and closing functions depend on the direction of actuation, the actuating magnets and the polarity of the actuating magnets.

Pictures

Product picture (catalogue individual photo)



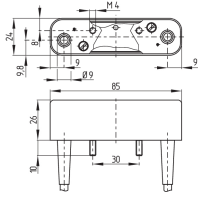
ID: kbn32f01

| 165.3 kB | .jpg | 352.778 x 162.631 mm - 1000 x 461 px - 72 dpi

| 15.6 kB | .png | 74.083 x 34.219 mm - 210 x 97 px - 72 dpi

| 21.2 kB | .jpg | 123.472 x 56.797 mm - 350 x 161 px - 72 dpi

Dimensional drawing basic component



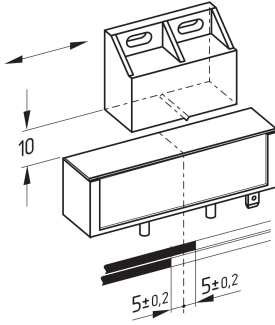
ID: 1bn32g02

| 78.7 kB | .cdr |

| 7.5 kB | .png | 74.083 x 51.153 mm - 210 x 145 px - 72 dpi

| 88.8 kB | .jpg | 352.778 x 244.475 mm - 1000 x 693 px - 72 dpi

Diagram



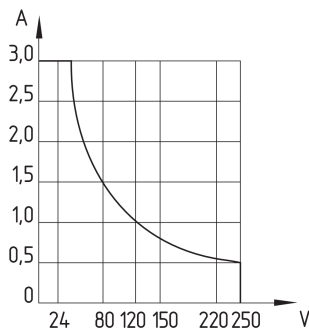
ID: kbn32k04

| 23.6 kB | .cdr |

| 205.4 kB | .jpg | 352.778 x 410.281 mm - 1000 x 1163 px - 72 dpi

| 18.8 kB | .png | 74.083 x 86.078 mm - 210 x 244 px - 72 dpi

Characteristic curve



ID: kbn32d01

| 110.5 kB | .jpg | 352.425 x 371.828 mm - 999 x 1054 px - 72 dpi

Schmersal India Pvt. Ltd., Plot No - G-7/1, Ranjangaon MIDC, Tal. - Shirur, Dist.- Pune 412 220

The details and data referred to have been carefully checked. Images may diverge from original. Further technical data can be found in the manual. Technical amendments and errors possible.

Generated on: 22/08/2024, 2:05 pm