



BN 80-01Z

- Non-contact principle
- 1 Reed kontakts
- Long life
- Flat design
- Actuating distance up to 60 mm depending on actuating magnet and version
- 44 mm x 13 mm x 9 mm
- Thermoplastic enclosure
- Actuating surface marked by protrusion

Data

Ordering data

Product type description	BN 80-01Z
Article number (order number)	101082364
EAN (European Article Number)	4030661024035
eCl@ss number, version 12.0	27-27-43-02
eCl@ss number, version 11.0	27-27-01-05
eCl@ss number, version 9.0	27-27-01-05
ETIM number, version 7.0	EC002544
ETIM number, version 6.0	EC002544

General data

Working principle	Magnetic drive
Housing construction form	Block
Housing material	Glass-fibre, reinforced thermoplastic
Active area	Plastic

Gross weight 23 g

General data - Features

Number of normally closed (NC) 1

Mechanical data

Actuating panels lateral
Active area lateral
Actuating element Magnet
Mechanical life, minimum 1,000,000,000 Operations

Mechanical data - Switching distances according EN IEC 60947-5-3

Switching distance S_n 0 mm ... 20 mm
BP 8 = 0 ... 5 mm
BP 10 = 2 ... 9 mm
2 x BP 10 = 2 ... 13 mm
BP 15 = 2 ... 10 mm
2 x BP 15 = 2 ... 15 mm
2 x BP 34 = 5 ... 18 mm
BP 20 = 0 ... 14 mm
BP 31 = 0 ... 14 mm
BP 11 = 2 ... 16 mm
BP 12 = 4 ... 20 mm

Note (Switching distance S_n) Actuating distance up to 20 mm depending on version and actuating magnet

Mechanical data - Connection technique

Length of cable 1 m
Termination Cable
Wire cross-section 0.25 mm²
Wire cross-section 23 AWG
Material of the Cable mantle PVC

Mechanical data - Dimensions

Length of sensor	9 mm
Width of sensor	44 mm
Height of sensor	13 mm

Ambient conditions

Degree of protection	IP67
Ambient temperature	-25 ... +75 °C
Resistance to shock	15 g, on sine wave oscillation
Resistant to vibration	15 g, on sine wave oscillation

Electrical data

Switching voltage, maximum	250 VAC
Switching voltage, maximum	250 VDC
Switching current, maximum	0.5 A
Switching capacity, maximum	8 W
Switching capacity, maximum	10 VA
Switching element	Opener (NC)
Bounce duration, maximum	0.5 ms

Electrical data - Digital Output

Design of control elements	Reed contacts
----------------------------	---------------

Scope of delivery

Scope of delivery	Actuator must be ordered separately.
-------------------	--------------------------------------

Accessory

Recommendation (actuator) BP 10
2x BP 10
BP 15
2x BP 15
BP 20
BP 31
BP 11
BP 12
BP 8
2 x BP 34

Note

Note (General) The opening and closing functions depend on the direction of actuation, the actuating magnets and the polarity of the actuating magnets.

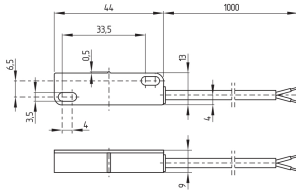
Pictures

Product picture (catalogue individual photo)



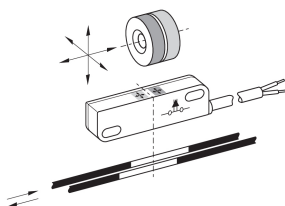
ID: kbn80f01
| 102.7 kB | .jpg | 352.778 x 67.733 mm - 1000 x 192 px - 72 dpi
| 8.3 kB | .png | 74.083 x 14.111 mm - 210 x 40 px - 72 dpi
| 12.3 kB | .jpg | 123.472 x 23.636 mm - 350 x 67 px - 72 dpi

Dimensional drawing basic component



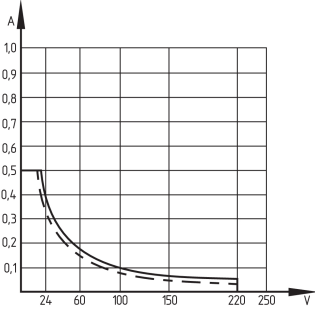
ID: 1bn80g01
| 64.5 kB | .cdr |
| 3.4 kB | .png | 74.083 x 51.153 mm - 210 x 145 px - 72 dpi
| 78.0 kB | .jpg | 352.778 x 244.475 mm - 1000 x 693 px - 72 dpi

Diagram



ID: 1bn80k01
| 21.6 kB | .cdr |
| 91.8 kB | .jpg | 352.778 x 243.769 mm - 1000 x 691 px - 72 dpi
| 10.9 kB | .png | 74.083 x 51.153 mm - 210 x 145 px - 72 dpi

Characteristic curve



ID: kbn80d01

| 2.7 kB | .png | 74.083 x 71.614 mm - 210 x 203 px - 72 dpi

| 113.9 kB | .jpg | 352.778 x 340.783 mm - 1000 x 966 px - 72 dpi

Schmersal India Pvt. Ltd., Plot No - G-7/1, Ranjangaon MIDC, Tal. - Shirur, Dist.- Pune 412 220

The details and data referred to have been carefully checked. Images may diverge from original. Further technical data can be found in the manual. Technical amendments and errors possible.

Generated on: 22/08/2024, 2:03 pm