



## BN 80-10Z

- Non-contact principle
- 1 Reed kontakts
- Long life
- Flat design
- Actuating distance up to 60 mm depending on actuating magnet and version
- 44 mm x 13 mm x 9 mm
- Thermoplastic enclosure
- Actuating surface marked by protrusion

## Data

### Ordering data

Product type description	BN 80-10Z
Article number (order number)	101055844
EAN (European Article Number)	4030661010021
eCl@ss number, version 12.0	27-27-43-02
eCl@ss number, version 11.0	27-27-01-05
eCl@ss number, version 9.0	27-27-01-05
ETIM number, version 7.0	EC002544
ETIM number, version 6.0	EC002544

### General data

Working principle	Magnetic drive
Housing construction form	Block
Housing material	Glass-fibre, reinforced thermoplastic
Active area	Plastic

Gross weight 24 g

## General data - Features

Number of normally open (NO) 1

## Mechanical data

Actuating panels lateral  
Active area lateral  
Actuating element Magnet  
Mechanical life, minimum 1,000,000,000 Operations

## Mechanical data - Switching distances according EN IEC 60947-5-3

Switching distance  $S_n$  0 mm ... 32 mm  
BP 8 = 3 ... 8 mm  
BP 10 = 6 ... 12 mm  
2 x BP 10 = 12 ... 20 mm  
BP 15 = 8 ... 14 mm  
2 x BP 15 = 12 ... 22 mm  
2 x BP 34 = 12 ... 26 mm  
BP 20 = 12 ... 24 mm  
BP 31 = 12 ... 24 mm  
BP 11 = 22 ... 28 mm  
BP 12 = 24 ... 32 mm

Note (Switching distance  $S_n$ ) Actuating distance up to 32 mm depending on version and actuating magnet

## Mechanical data - Connection technique

Length of cable 1 m  
Termination Cable  
Wire cross-section 0.25 mm<sup>2</sup>  
Wire cross-section 23 AWG  
Material of the Cable mantle PVC

## Mechanical data - Dimensions

Length of sensor	9 mm
Width of sensor	44 mm
Height of sensor	13 mm

### **Ambient conditions**

Degree of protection	IP67
Ambient temperature	-25 ... +75 °C
Resistance to shock	15 g, on sine wave oscillation
Resistant to vibration	15 g, on sine wave oscillation

### **Electrical data**

Switching voltage, maximum	250 VAC
Switching voltage, maximum	250 VDC
Switching current, maximum	0.5 A
Switching capacity, maximum	8 W
Switching capacity, maximum	10 VA
Switching element	Normally open contact (NO)
Bounce duration, maximum	0.5 ms

### **Electrical data - Digital Output**

Design of control elements	Reed contacts
----------------------------	---------------

### **Scope of delivery**

Scope of delivery	Actuator must be ordered separately.
-------------------	--------------------------------------

### **Accessory**

Recommendation (actuator) BP 10  
2x BP 10  
BP 15  
2x BP 15  
BP 20  
BP 31  
BP 11  
BP 12  
BP 8  
2 x BP 34

## Note

Note (General) The opening and closing functions depend on the direction of actuation, the actuating magnets and the polarity of the actuating magnets.

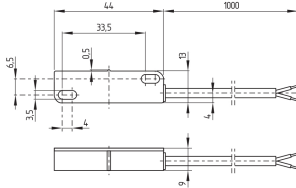
## Pictures

### Product picture (catalogue individual photo)



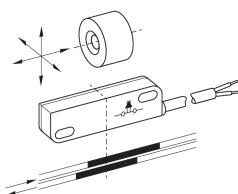
ID: kbn80f01  
| 102.7 kB | .jpg | 352.778 x 67.733 mm - 1000 x 192 px - 72 dpi  
| 8.3 kB | .png | 74.083 x 14.111 mm - 210 x 40 px - 72 dpi  
| 12.3 kB | .jpg | 123.472 x 23.636 mm - 350 x 67 px - 72 dpi

### Dimensional drawing basic component



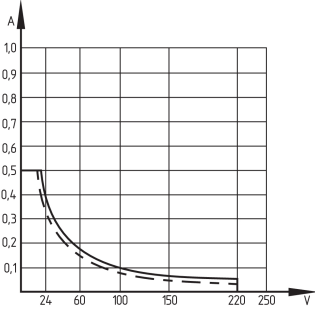
ID: 1bn80g01  
| 64.5 kB | .cdr |  
| 3.4 kB | .png | 74.083 x 51.153 mm - 210 x 145 px - 72 dpi  
| 78.0 kB | .jpg | 352.778 x 244.475 mm - 1000 x 693 px - 72 dpi

### Diagram



ID: 1bn80k03  
| 21.1 kB | .cdr |  
| 82.3 kB | .jpg | 352.778 x 243.769 mm - 1000 x 691 px - 72 dpi  
| 9.6 kB | .png | 74.083 x 51.153 mm - 210 x 145 px - 72 dpi

## Characteristic curve



ID: kbn80d01

| 2.7 kB | .png | 74.083 x 71.614 mm - 210 x 203 px - 72 dpi

| 113.9 kB | .jpg | 352.778 x 340.783 mm - 1000 x 966 px - 72 dpi

Schmersal India Pvt. Ltd., Plot No - G-7/1, Ranjangaon MIDC, Tal. - Shirur, Dist.- Pune 412 220

The details and data referred to have been carefully checked. Images may diverge from original. Further technical data can be found in the manual. Technical amendments and errors possible.

Generated on: 22/08/2024, 2:03 pm