



T3Z 068-22YR

- 2 switches in one enclosure
- Metal enclosure
- two-side operation / wire up to 2 x 50 m long
- Robust design
- Low actuating force

Data

Ordering data

| | |
|-------------------------------|---------------|
| Product type description | T3Z 068-22YR |
| Article number (order number) | 101087881 |
| EAN (European Article Number) | 4030661057170 |
| eCl@ss number, version 12.0 | 27-27-06-01 |
| eCl@ss number, version 11.0 | 27-27-06-01 |
| eCl@ss number, version 9.0 | 27-27-06-01 |
| ETIM number, version 7.0 | EC000030 |
| ETIM number, version 6.0 | EC000030 |

Approvals - Standards

| | |
|--------------|---------------------|
| Certificates | IFA cULus CCC |
|--------------|---------------------|

General data

| | |
|-----------|------------------------------------------------------|
| Standards | EN ISO 13850 EN IEC 60947-5-1 EN IEC 60947-5-5 |
|-----------|------------------------------------------------------|

| | |
|-------------------------------|-------------------------|
| Housing material | Grey cast iron, painted |
| Material of the housing cover | Grey cast iron, painted |
| Length of the wire, maximum | 50 m |
| Gross weight | 4,540 g |

General data - Features

| | |
|------------------------------|-----|
| Reset by pull ring | Yes |
| Number of auxiliary contacts | 2 |
| Number of safety contacts | 2 |

Safety classification

| | |
|--------------|----------------|
| Standards | EN ISO 13849-1 |
| Mission time | 20 Year(s) |

Safety classification - Safety outputs

| | |
|-----------------------------------------------|--------------------|
| B _{10D} Normally-closed contact (NC) | 100,000 Operations |
|-----------------------------------------------|--------------------|

Mechanical data

| | |
|-------------------------------|-----------------------------------------------------------|
| Actuating element | Roller lever N300 |
| Mechanical life, minimum | 50,000 Operations |
| Positive break angle | 32 ° |
| Actuating force, maximum | 50 N |
| Note (Actuating force) | 30 N in wire direction |
| Actuation direction | Each time 75° right-hand side and left-hand side rotation |
| Positive break force, minimum | 50 N |
| Positive break torque | 0.2 Nm |

Mechanical data - Connection technique

| | |
|-------------|---------------------------|
| Termination | Screw terminals M20 x 1.5 |
|-------------|---------------------------|

| | |
|------------------------|---------------------------------------------------|
| Cable section, minimum | 0.75 mm ² |
| Cable section, maximum | 1.5 mm ² |
| Note | All indications including the conductor ferrules. |

Ambient conditions

| | |
|----------------------|----------------|
| Degree of protection | IP65 |
| Ambient temperature | -30 ... +90 °C |

Ambient conditions - Insulation values

| | |
|-------------------------------------------|---------|
| Rated insulation voltage U_i | 250 VAC |
| Rated impulse withstand voltage U_{imp} | 4 kV |

Electrical data

| | |
|--------------------------------------|------------------------|
| Thermal test current | 10 A |
| Utilisation category AC-15 | 230 VAC |
| Utilisation category AC-15 | 2.5 A |
| Utilisation category DC-13 | 24 VDC |
| Utilisation category DC-13 | 6 A |
| Switching element | NO contact, NC contact |
| Switching principle | Slow action |
| Material of the contacts, electrical | Silver |

Note

| | |
|----------------|--------------------------------------------------------------------------|
| Note (General) | At 3 m distance intermediate wire supports are required, see accessories |
|----------------|--------------------------------------------------------------------------|

Ordering code

Product type description:
T3Z 068-(1)YR(2)(3)

(1)

| | |
|----------------|--------------------------------------------------------------------------|
| 11 | 1 NO contacts/1 NC contact |
| 22 | 2 NO contacts/2 NC contact |
| 33 | 3 NO contacts / 3 NC contacts (not combinable in combination with -2909) |
| (2) | |
| without | Reset by pull ring |
| S | Key reset (not combinable in combination with -2909) |
| (3) | |
| without | without indicator lamp |
| G | with indicator lamp (not combinable in combination with -2909) |
| 2909 | Outside parts in stainless steel |

Pictures

Product picture (catalogue individual photo)



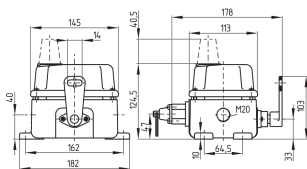
ID: kt3z0f02

| 631.4 kB | .jpg | 352.778 x 480.131 mm - 1000 x 1361 px - 72 dpi

| 59.4 kB | .png | 73.731 x 100.542 mm - 209 x 285 px - 72 dpi

| 55.4 kB | .jpg | 90.664 x 123.472 mm - 257 x 350 px - 72 dpi

Dimensional drawing basic component



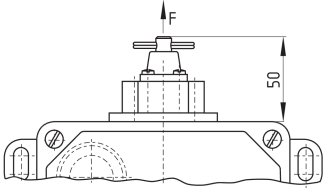
ID: 1t3z0g01

| 43.4 kB | .cdr |

| 9.9 kB | .png | 74.083 x 51.858 mm - 210 x 147 px - 72 dpi

| 118.6 kB | .jpg | 352.778 x 247.297 mm - 1000 x 701 px - 72 dpi

Dimensional drawing miscellaneous



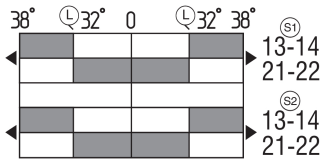
ID: kt3z0g02

| 31.2 kB | .cdr |

| 3.3 kB | .png | 74.083 x 43.744 mm - 210 x 124 px - 72 dpi

| 93.5 kB | .jpg | 352.778 x 208.844 mm - 1000 x 592 px - 72 dpi

Switch travel diagram



ID: kt3z0s03

| 2.6 kB | .png | 74.083 x 35.983 mm - 210 x 102 px - 72 dpi

| 89.4 kB | .jpg | 352.778 x 171.097 mm - 1000 x 485 px - 72 dpi

| 68.5 kB | .ai | 210 x 297 mm - 595 x 841 px - 72 dpi

Schmersal India Pvt. Ltd., Plot No - G-7/1, Ranjangaon MIDC, Tal. - Shirur, Dist.- Pune 412 220

The details and data referred to have been carefully checked. Images may diverge from original. Further technical data can be found in the manual. Technical amendments and errors possible.

Generated on: 30/08/2024, 11:34 am