



## AZ315-T02R

- Design to EN 50041
- Metal enclosure
- Actuator heads can be repositioned in steps 4 x 90°
- Different contact options
- Latching force 12N or 30N depending on variant

## Data

### Ordering data

|                               |               |
|-------------------------------|---------------|
| Product type description      | AZ315-T02R    |
| Article number (order number) | 103049879     |
| EAN (European Article Number) | 4030661625485 |
| eCl@ss number, version 12.0   | 27-27-06-10   |
| eCl@ss number, version 11.0   | 27-27-06-10   |
| eCl@ss number, version 9.0    | 27-27-06-10   |
| ETIM number, version 7.0      | EC002592      |
| ETIM number, version 6.0      | EC002592      |

### Approvals - Standards

|              |              |
|--------------|--------------|
| Certificates | cULus<br>CCC |
|--------------|--------------|

### General data

|  |  |
|--|--|
| Standards                              | EN ISO 13849-1<br>EN ISO 14119<br>EN IEC 60947-5-1 |
| Coding level according to EN ISO 14119 | Low  |

|                          |                      |
|--------------------------|----------------------|
| Working principle        | electromechanical    |
| Housing material         | Metal, zinc die-cast |
| Housing coating material | painted              |

## General data - Features

|                           |   |
|---------------------------|---|
| Number of safety contacts | 2 |
| Number of cable glands    | 1 |

## Safety classification

|   |                                      |
|---|--------------------------------------|
| Standards                                     | EN ISO 13849-1                       |
| Performance Level, up to                      | c                                    |
| Category                                      | 1                                    |
| B <sub>10D</sub> Normally-closed contact (NC) | 2,000,000 Operations                 |
| B <sub>10D</sub> Normally-open contact (NO)   | 1,000,000 Operations                 |
| Note  | at 10% I <sub>e</sub> and ohmic load |
| Mission time                                  | 20 Year(s)                           |

## Safety classification - Fault exclusion

|                          |   |
|--------------------------|---|
| Please note:             | Can be used when fault exclusion for dangerous damage to the 1-channel mechanism is permissible and sufficient protection against manipulation is guaranteed. |
| Performance Level, up to | d   |
| Category                 | 3   |
| Note                     | for 2-channel use and with suitable logic unit.   |

## Mechanical data

|                          |                      |
|--------------------------|----------------------|
| Mechanical life, minimum | 1,000,000 Operations |
| Latching force           | 30 N                 |
| Positive break travel    | 5 mm                 |

|   |         |
|---|---------|
| Positive break force per NC contact, minimum                    | 10 N    |
| Positive break force, minimum                                   | 20 N    |
| Actuating speed, maximum  | 0.2 m/s |
| Mounting  | Screws  |
| Type of the fixing screws                                       | 2x M4   |
| Tightening torque of the fixing screws                          | 2 Nm    |
| Tightening torque of the fastening screws for the housing cover | 2.6 Nm  |

### Mechanical data - Connection technique

|   |   |
|---|---|
| Termination   | Screw terminals M20 x 1.5                         |
| Cable entry   | 1 x M20 x 1,5                                     |
| Termination   | Screw terminals                                   |
| Cable section, minimum                              | 0.34 mm <sup>2</sup>                              |
| Cable section, maximum                              | 1.5 mm <sup>2</sup>                               |
| Note  | All indications including the conductor ferrules. |
| Tightening torque of electrical connection, minimum | 0.6 Nm  |
| Tightening torque of electrical connection, maximum | 0.8 Nm  |
| Note (Cable entry)                                  | Settle length of the conductor: 5...6mm           |
| Allowed type of cable                               | solid single-wire<br>solid multi-wire<br>flexible |

### Mechanical data - Dimensions

|                  |          |
|------------------|----------|
| Length of sensor | 37 mm    |
| Width of sensor  | 40 mm    |
| Height of sensor | 113.8 mm |

### Ambient conditions

|  |                |
|--|----------------|
| Degree of protection                                       | IP66<br>IP67   |
| Ambient temperature  | -30 ... +80 °C |
| Storage and transport temperature                          | -40 ... +85 °C |
| Permissible installation altitude above sea level, maximum | 2,000 m        |

### Ambient conditions - Insulation values

|   |         |
|---|---------|
| Rated insulation voltage $U_i$            | 250 VAC |
| Rated impulse withstand voltage $U_{imp}$ | 4 kV    |
| Overtoltage category                      | I       |
| Degree of pollution                       | 3       |

### Electrical data

|                                      |  |
|--------------------------------------|--|
| Thermal test current                 | 10 A   |
| Required rated short-circuit current | 400 A  |
| Switching element                    | 2 NC contact   |
| Note (Switching element)             | Change-over contact with double break, type Zb or 3 NC contacts, with galvanically separated contact bridges |
| Switching principle                  | slow action, positive break NC contact   |
| Maximum switching frequency          | 1,200 /h   |
| Material of the contacts, electrical | Silver   |

### Electrical data - Safety contacts

|                                     |         |
|-------------------------------------|---------|
| Voltage, Utilisation category AC-15 | 230 VAC |
| Current, Utilisation category AC-15 | 3 A     |
| Voltage, Utilisation category DC-13 | 24 VDC  |
| Current, Utilisation category DC-13 | 3 A     |

## Electrical data - Auxiliary contacts

|                                     |         |
|-------------------------------------|---------|
| Voltage, Utilisation category AC-15 | 230 VAC |
| Current, Utilisation category AC-15 | 3 A     |
| Voltage, Utilisation category DC-13 | 24 VDC  |
| Current, Utilisation category DC-13 | 3 A     |

## Other data

|                     |  |
|---------------------|--|
| Note (applications) | sliding safety guard<br>removable guard<br>hinged safety guard |
|---------------------|--|

## Scope of delivery

|                   |  |
|-------------------|--|
| Scope of delivery | Actuator must be ordered separately.<br>Slot cover for dust-proof covering of the opening not in use |
|-------------------|--|

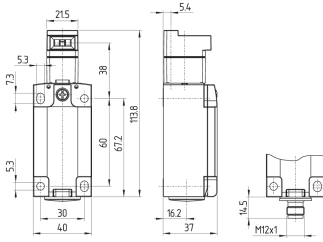
## Pictures

### Product picture (catalogue individual photo)



ID: kaz31f01  
| 857.0 kB | .jpg | 352.778 x 676.275 mm - 1000 x 1917 px - 72 dpi  
| 64.6 kB | .png | 74.083 x 141.817 mm - 210 x 402 px - 72 dpi

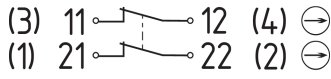
## Dimensional drawing basic component



ID: kaz31xg01

| 123.3 kB | .jpg | 352.778 x 259.997 mm - 1000 x 737 px - 72 dpi

## Diagram



ID: kps2xk23

| 55.2 kB | .jpg | 352.778 x 95.25 mm - 1000 x 270 px - 72 dpi

| 3.0 kB | .png | 74.083 x 20.108 mm - 210 x 57 px - 72 dpi

Schmersal India Pvt. Ltd., Plot No - G-7/1, Ranjangaon MIDC, Tal. - Shirur, Dist.- Pune 412 220

The details and data referred to have been carefully checked. Images may diverge from original. Further technical data can be found in the manual. Technical amendments and errors possible.

Generated on: 27/08/2024, 9:18 am