



BNS 260-02Z-ST-R

- Connector M8 x 1, 4-pole
- Thermoplastic enclosure
- small body
- Concealed mounting possible
- 26 mm x 36 mm x 13 mm
- Long life
- no mechanical wear
- Insensitive to transverse misalignment
- Insensitive to soiling

Data

Ordering data

| | |
|-------------------------------|------------------|
| Product type description | BNS 260-02Z-ST-R |
| Article number (order number) | 101184361 |
| EAN (European Article Number) | 4030661321585 |
| eCl@ss number, version 12.0 | 27-27-44-01 |
| eCl@ss number, version 11.0 | 27-27-24-02 |
| eCl@ss number, version 9.0 | 27-27-24-02 |
| ETIM number, version 7.0 | EC002544 |
| ETIM number, version 6.0 | EC002544 |

Approvals - Standards

| | |
|--------------|---------------|
| Certificates | cULus UKCA |
|--------------|---------------|

General data

| | |
|--|---------------------------------------|
| Standards | BG-GS-ET-14 EN IEC 60947-5-3 |
| Coding level according to EN ISO 14119 | Low |
| Working principle | Magnetic drive |
| Installation conditions (mechanical) | quasi-flush |
| Housing material | Glass-fibre, reinforced thermoplastic |
| Gross weight | 33 g |

General data - Features

| | |
|--------------------------------|-----|
| Coding | Yes |
| Number of normally closed (NC) | 2 |
| Number of safety contacts | 2 |

Safety classification

| | |
|--------------|----------------|
| Standards | EN ISO 13849-1 |
| Mission time | 20 Year(s) |

Safety classification - Safety outputs

| | |
|--|-----------------------|
| B _{10D} Normally-closed contact (NC) | 25,000,000 Operations |
| B _{10D} - Value Normally-closed contact/Normally open contact (NC/NO) | 25,000,000 Operations |

Mechanical data

| | |
|---------------------|-------------------------------|
| Actuating element | Magnet |
| Door hinge | Right |
| Direction of motion | Head-on to the active surface |

Mechanical data - Switching distances according EN IEC 60947-5-3

Note (Switching distance S_n) Axial misalignment, a horizontal and vertical misalignment of the safety sensor and the actuator are tolerated. The possible misalignment depends on the distance of the active surfaces of the sensor and the actuator. The sensor remains active within the tolerance range.

Assured switching distance
"ON" S_{ao} 5 mm

Assured switching distance
"OFF" S_{ar} 15 mm

Mechanical data - Connection technique

Termination Connector M8

Tightening torque of electrical
connection 0.3 Nm

Mechanical data - Dimensions

Length of sensor 13 mm

Width of sensor 26 mm

Height of sensor 36 mm

Ambient conditions

Degree of protection IP67

Ambient temperature -25 ... +70 °C

Storage and transport
temperature -25 ... +70 °C

Resistance to vibrations 10 ... 55 Hz, amplitude 1 mm

Resistance to shock 30 g / 11 ms

Ambient conditions - Insulation values

Rated insulation voltage U_i 50 VAC

Rated impulse withstand
voltage U_{imp} 0.8 kV

Electrical data

| | |
|--------------------------------------|--------------|
| Required rated short-circuit current | 100 A |
| Switching voltage, maximum | 75 VDC |
| Switching current, maximum | 0.4 A |
| Switching capacity, maximum | 10 VA |
| Switching element | 2 NC contact |
| Switching frequency, maximum | 5 Hz |

Scope of delivery

| | |
|-------------------|--------------------------------------|
| Scope of delivery | Actuator must be ordered separately. |
|-------------------|--------------------------------------|

Accessory

| | |
|-------------------------------|----------------------------|
| Recommendation (actuator) | BPS 260 |
| Recommended safety switchgear | SRB-E-301ST SRB-E-201LC |

Note

| | |
|----------------|--|
| Note (General) | The number in brackets indicate the PIN number of the connector. |
|----------------|--|

Wiring example

| | |
|-----------------------|--|
| Note (Wiring diagram) | The contacts S11-S12 and S21-S22 must be integrated in the safety circuit. |
|-----------------------|--|

Ordering code

Product type description:
BNS 260-(1)(2)Z(3)-(4)-(5)

(1)

11

1 NO contacts/1 NC contact

| | |
|----------------|--|
| 02 | 2 NC contact |
| (2) | |
| without | with diagnostic output |
| /01 | 1 NC contact |
| (3) | |
| without | without LED switching conditions display |
| G | with LED switching conditions display |
| (4) | |
| without | Pre-wired cable |
| ST | with connector |
| (5) | |
| L | Door hinge on left-hand side |
| R | Door hinge on right-hand side |

Pictures

Product picture (catalogue individual photo)



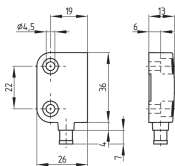
ID: kbns2f05

| 533.2 kB | .jpg | 352.778 x 287.161 mm - 1000 x 814 px - 72 dpi

| 42.7 kB | .png | 74.083 x 60.325 mm - 210 x 171 px - 72 dpi

| 64.3 kB | .jpg | 123.472 x 100.542 mm - 350 x 285 px - 72 dpi

Dimensional drawing basic component



ID: 1bns2g03

| 24.9 kB | .cdr |

| 2.9 kB | .png | 74.083 x 51.506 mm - 210 x 146 px - 72 dpi

| 61.2 kB | .jpg | 352.778 x 245.181 mm - 1000 x 695 px - 72 dpi

Diagram

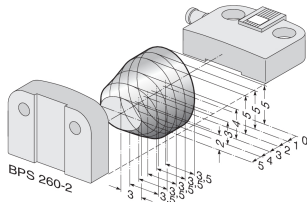
(3) BK S11 — S12 BU (4)
(1) WH S21 — S22 BN (2)

ID: kbns2k25

| 56.8 kB | .jpg | 352.778 x 70.203 mm - 1000 x 199 px - 72 dpi

| 2.6 kB | .png | 74.083 x 14.817 mm - 210 x 42 px - 72 dpi

Characteristic curve

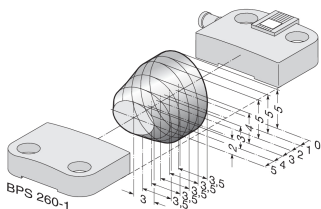


ID: kbns2d03

| 18.5 kB | .png | 74.083 x 49.036 mm - 210 x 139 px - 72 dpi

| 200.1 kB | .jpg | 352.778 x 233.892 mm - 1000 x 663 px - 72 dpi

Characteristic curve

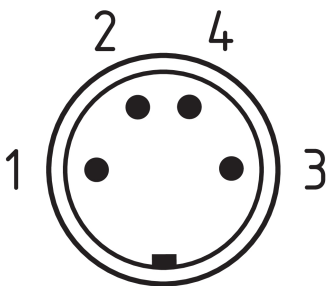


ID: kbns2d02

| 19.2 kB | .png | 74.083 x 49.389 mm - 210 x 140 px - 72 dpi

| 200.9 kB | .jpg | 352.778 x 235.303 mm - 1000 x 667 px - 72 dpi

Contact arrangement



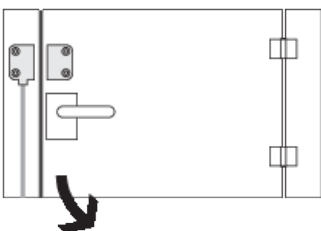
ID: km8--k4b

| 17.0 kB | .cdr |

| 4.3 kB | .png | 74.083 x 73.025 mm - 210 x 207 px - 72 dpi

| 110.6 kB | .jpg | 352.778 x 347.133 mm - 1000 x 984 px - 72 dpi

Clipart



ID: kbns2c01

| 20.1 kB | .cdr |

| 1.7 kB | .png | 74.083 x 52.564 mm - 210 x 149 px - 72 dpi

The details and data referred to have been carefully checked. Images may diverge from original. Further technical data can be found in the manual. Technical amendments and errors possible.

Generated on: 23/08/2024, 2:01 pm