



## BNS 40S-12Z-C 10,0M

- especially easy to clean through concealed threaded holes at the rear
- Stainless steel enclosure
- Cable connection suitable for the food industry
- Concealed mounting possible
- 88 mm x 27 mm x 14,5 mm
- Long life
- no mechanical wear
- Insensitive to soiling
- Insensitive to transverse misalignment
- Suitable for food processing industry

## Data

### Ordering data

|                               |                     |
|-------------------------------|---------------------|
| Product type description      | BNS 40S-12Z-C 10,0M |
| Article number (order number) | 103000655           |
| EAN (European Article Number) | 4030661421056       |
| eCl@ss number, version 12.0   | 27-27-44-01         |
| eCl@ss number, version 11.0   | 27-27-24-02         |
| eCl@ss number, version 9.0    | 27-27-24-02         |
| ETIM number, version 7.0      | EC002544            |
| ETIM number, version 6.0      | EC002544            |

### Approvals - Standards

Certificates

cULus  
ECOLAB  
UKCA

## General data

|                                        |                                 |
|----------------------------------------|---------------------------------|
| Standards                              | BG-GS-ET-14<br>EN IEC 60947-5-3 |
| Coding level according to EN ISO 14119 | Low                             |
| Working principle                      | Magnetic drive                  |
| Installation conditions (mechanical)   | not flush                       |
| Housing material                       | Stainless steel (V4A)           |
| Gross weight                           | 500 g                           |

## General data - Features

|                                       |     |
|---------------------------------------|-----|
| Coding                                | Yes |
| Concealed, threaded holes on the back | Yes |
| Prerequisite evaluation unit          | Yes |
| Number of normally closed (NC)        | 2   |
| Number of normally open (NO)          | 1   |
| Number of cable wires                 | 6   |

## Safety classification

|              |                |
|--------------|----------------|
| Standards    | EN ISO 13849-1 |
| Mission time | 20 Year(s)     |

## Mechanical data

|                     |                               |
|---------------------|-------------------------------|
| Actuating element   | Magnet                        |
| Direction of motion | Head-on to the active surface |

## Mechanical data - Switching distances according EN IEC 60947-5-3

|                                           |       |
|-------------------------------------------|-------|
| Assured switching distance "ON" $S_{ao}$  | 8 mm  |
| Assured switching distance "OFF" $S_{ar}$ | 18 mm |

## Mechanical data - Connection technique

|                              |                      |
|------------------------------|----------------------|
| Length of cable              | 10 m                 |
| Termination                  | Cable                |
| Wire cross-section           | 0.25 mm <sup>2</sup> |
| Wire cross-section           | 23 AWG               |
| Material of the Cable mantle | LiYY                 |

## Mechanical data - Dimensions

|                  |         |
|------------------|---------|
| Length of sensor | 14.5 mm |
| Width of sensor  | 88 mm   |
| Height of sensor | 27 mm   |

## Ambient conditions

|                                   |                              |
|-----------------------------------|------------------------------|
| Degree of protection              | IP69                         |
| Ambient temperature               | -25 ... +80 °C               |
| Storage and transport temperature | -25 ... +80 °C               |
| Resistance to vibrations          | 10 ... 55 Hz, amplitude 1 mm |
| Resistance to shock               | 30 g / 11 ms                 |

## Electrical data

|                              |                             |
|------------------------------|-----------------------------|
| Switching current, maximum   | 0.25 A                      |
| Switching capacity, maximum  | 3 W                         |
| Switching element            | 1 NO contact, 2 NC contacts |
| Switching frequency, maximum | 5 Hz                        |

## Electrical data - Digital Output

|                            |                              |
|----------------------------|------------------------------|
| Design of control elements | Miscellaneous, Reed contacts |
|----------------------------|------------------------------|

## Scope of delivery

Scope of delivery

Actuator must be ordered separately.

## Accessory

|                               |                                         |
|-------------------------------|-----------------------------------------|
| Recommendation (actuator)     | BPS 40S-2<br>BPS 40S-1-C<br>BPS 40S-2-C |
| Recommended safety switchgear | SRB-E-301ST<br>SRB-E-201LC              |

## Note

|                |                                                                                                                                                 |
|----------------|-------------------------------------------------------------------------------------------------------------------------------------------------|
| Note (General) | Contact symbols shown for the closed condition of the guard device.<br>The contact configuration for versions with or without LED is identical. |
|----------------|-------------------------------------------------------------------------------------------------------------------------------------------------|

## Wiring example

|                       |                                                           |
|-----------------------|-----------------------------------------------------------|
| Note (Wiring diagram) | Contact S21-S22 must be integrated in the safety circuit. |
|-----------------------|-----------------------------------------------------------|

## Ordering code

Product type description:

BNS 40S-12Z(1)-(2)

(1)

|                |                                          |
|----------------|------------------------------------------|
| <b>without</b> | without LED switching conditions display |
| <b>G</b>       | with LED switching conditions display    |

(2)

|                |                                          |
|----------------|------------------------------------------|
| <b>without</b> | with countersunk mounting holes Ø 4.2 mm |
| <b>C</b>       | concealed threaded holes on the back M4  |

## Pictures

### Product picture (catalogue individual photo)



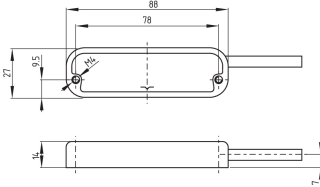
ID: kbns4f12

| 206.7 kB | .jpg | 352.778 x 89.958 mm - 1000 x 255 px - 72 dpi

| 15.8 kB | .png | 74.083 x 19.05 mm - 210 x 54 px - 72 dpi

| 25.3 kB | .jpg | 123.472 x 31.397 mm - 350 x 89 px - 72 dpi

## Dimensional drawing basic component



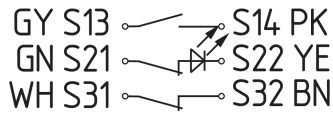
ID: 1bns4g02

| 22.5 kB | .cdr |

| 58.5 kB | .jpg | 352.778 x 204.258 mm - 1000 x 579 px - 72 dpi

| 4.7 kB | .png | 74.083 x 43.039 mm - 210 x 122 px - 72 dpi

## Diagram



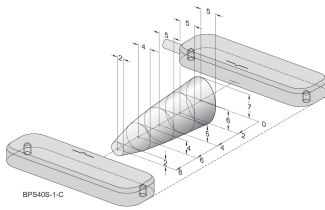
ID: kbns3k32

| 25.4 kB | .cdr |

| 91.7 kB | .jpg | 352.778 x 112.536 mm - 1000 x 319 px - 72 dpi

| 3.9 kB | .png | 74.083 x 23.636 mm - 210 x 67 px - 72 dpi

## Characteristic curve

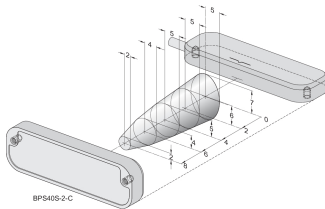


ID: kbns4d01

| 14.0 kB | .png | 74.083 x 46.214 mm - 210 x 131 px - 72 dpi

| 151.1 kB | .jpg | 352.778 x 220.486 mm - 1000 x 625 px - 72 dpi

## Characteristic curve



ID: kbns4d02

| 14.3 kB | .png | 74.083 x 46.919 mm - 210 x 133 px - 72 dpi

| 147.9 kB | .jpg | 352.778 x 223.661 mm - 1000 x 634 px - 72 dpi

Schmersal India Pvt. Ltd., Plot No - G-7/1, Ranjangaon MIDC, Tal. - Shirur, Dist.- Pune 412 220

The details and data referred to have been carefully checked. Images may diverge from original. Further technical data can be found in the manual. Technical amendments and errors possible.

Generated on: 24/08/2024, 9:20 am