

## BNS 40S-12ZG-C 3,0M

- Stainless steel enclosure
- Cable connection suitable for the food industry
- Concealed mounting possible
- 88 mm x 27 mm x 14,5 mm
- Long life
- no mechanical wear
- Insensitive to soiling
- Insensitive to transverse misalignment
- Suitable for food processing industry

## Data

### Ordering data

Product type description	BNS 40S-12ZG-C 3,0M
Article number (order number)	103000642
EAN (European Article Number)	4030661420936
eCl@ss number, version 12.0	27-27-44-01
eCl@ss number, version 11.0	27-27-24-02
eCl@ss number, version 9.0	27-27-24-02
ETIM number, version 7.0	EC002544
ETIM number, version 6.0	EC002544

### Approvals - Standards

Certificates	cULus ECOLAB UKCA
--------------	-------------------------

### General data

Standards	BG-GS-ET-14 EN IEC 60947-5-3
Coding level according to EN ISO 14119	Low
Working principle	Magnetic drive
Installation conditions (mechanical)	not flush
Housing material	Stainless steel (V4A)
Gross weight	250 g

### General data - Features

Coding	Yes
Concealed, threaded holes on the back	Yes
Integral system diagnostics, general	Yes
Prerequisite evaluation unit	Yes
Number of normally closed (NC)	2
Number of normally open (NO)	1
Number of cable wires	6

### Safety classification

Standards	EN ISO 13849-1
Mission time	20 Year(s)

### Mechanical data

Actuating element	Magnet
Direction of motion	Head-on to the active surface

### Mechanical data - Switching distances according EN IEC 60947-5-3

Assured switching distance "ON" $S_{ao}$	8 mm
Assured switching distance "OFF" $S_{ar}$	18 mm

## Mechanical data - Connection technique

Length of cable	3 m
Termination	Cable
Wire cross-section	0.25 mm <sup>2</sup>
Wire cross-section	23 AWG
Material of the Cable mantle	LiYY

## Mechanical data - Dimensions

Length of sensor	14.5 mm
Width of sensor	88 mm
Height of sensor	27 mm

## Ambient conditions

Degree of protection	IP69
Ambient temperature	-25 ... +80 °C
Storage and transport temperature	-25 ... +80 °C
Resistance to vibrations	10 ... 55 Hz, amplitude 1 mm
Resistance to shock	30 g / 11 ms

## Electrical data

Switching current, maximum	0.01 A
Switching capacity, maximum	0.24 W
Switching element	1 NO contact, 2 NC contacts
Switching frequency, maximum	5 Hz

## Electrical data - Digital Output

Design of control elements	Miscellaneous, Reed contacts
----------------------------	------------------------------

## Scope of delivery

Scope of delivery

Actuator must be ordered separately.

## Accessory

Recommendation (actuator)	BPS 40S-2 BPS 40S-1-C BPS 40S-2-C
Recommended safety switchgear	SRB-E-301ST SRB-E-201LC

## Note

Note (General)	Contact symbols shown for the closed condition of the guard device. The contact configuration for versions with or without LED is identical.
----------------	---

## Wiring example

Note (Wiring diagram)	Contact S21-S22 must be integrated in the safety circuit.
-----------------------	---

## Ordering code

Product type description:

BNS 40S-12Z(1)-(2)

(1)

<b>without</b>	without LED switching conditions display
<b>G</b>	with LED switching conditions display

(2)

<b>without</b>	with countersunk mounting holes Ø 4.2 mm
<b>C</b>	concealed threaded holes on the back M4

## Pictures

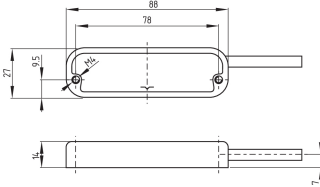
### Product picture (catalogue individual photo)



ID: kbns4f02

| 209.5 kB | .jpg | 352.778 x 89.958 mm - 1000 x 255 px - 72 dpi  
| 16.0 kB | .png | 74.083 x 19.05 mm - 210 x 54 px - 72 dpi  
| 26.1 kB | .jpg | 123.472 x 31.397 mm - 350 x 89 px - 72 dpi

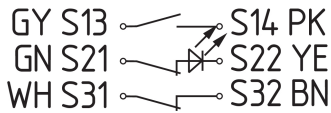
### Dimensional drawing basic component



ID: 1bns4g02

| 22.5 kB | .cdr |  
| 58.5 kB | .jpg | 352.778 x 204.258 mm - 1000 x 579 px - 72 dpi  
| 4.7 kB | .png | 74.083 x 43.039 mm - 210 x 122 px - 72 dpi

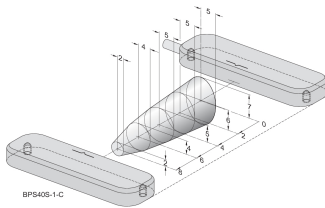
### Diagram



ID: kbns3k32

| 25.4 kB | .cdr |  
| 91.7 kB | .jpg | 352.778 x 112.536 mm - 1000 x 319 px - 72 dpi  
| 3.9 kB | .png | 74.083 x 23.636 mm - 210 x 67 px - 72 dpi

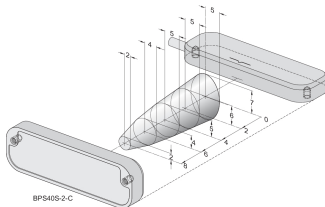
### Characteristic curve



ID: kbns4d01

| 14.0 kB | .png | 74.083 x 46.214 mm - 210 x 131 px - 72 dpi  
| 151.1 kB | .jpg | 352.778 x 220.486 mm - 1000 x 625 px - 72 dpi

### Characteristic curve



ID: kbns4d02

| 14.3 kB | .png | 74.083 x 46.919 mm - 210 x 133 px - 72 dpi  
| 147.9 kB | .jpg | 352.778 x 223.661 mm - 1000 x 634 px - 72 dpi