



## AZM 161SK-12/03RKA-024

- Large wiring compartment
- Manual release
- cable entries 4 M 16 x 1.5
- Thermoplastic enclosure
- Double-insulated
- Interlock with protection against incorrect locking.
- 130 mm x 90 mm x 30 mm
- 6 Contacts
- Long life

## Data

### Ordering data

Product type description	AZM 161SK-12/03RKA-024
Article number (order number)	101195892
EAN (European Article Number)	4030661363097
eCl@ss number, version 12.0	27-27-26-03
eCl@ss number, version 11.0	27-27-26-03
eCl@ss number, version 9.0	27-27-26-03
ETIM number, version 7.0	EC002593
ETIM number, version 6.0	EC002593

### Approvals - Standards

Certificates	IFA cULus CCC UKCA
--------------	-----------------------------

## General data

Standards	EN ISO 13849-1 EN ISO 14119 EN IEC 60947-5-1
Coding level according to EN ISO 14119	Low
Working principle	electromechanical
Housing material	Plastic, glass-fibre reinforced thermoplastic, self-extinguishing
Gross weight	465 g

## General data - Features

Power to lock	Yes
Manual release	Yes
Number of actuating directions	3
Number of auxiliary contacts	1
Number of safety contacts	5

## Safety classification

Standards	EN ISO 13849-1
Performance Level, up to	c
Category	1
B <sub>10D</sub> Normally-closed contact (NC)	2,000,000 Operations
Note	Electrical life on request.
B <sub>10D</sub> Normally-open contact (NO)	1,000,000 Operations
Note	at 10% I <sub>e</sub> and ohmic load

Mission time 20 Year(s)

### Safety classification - Fault exclusion

Please note: Can be used when fault exclusion for dangerous damage to the 1-channel mechanism is permissible and sufficient protection against manipulation is guaranteed.

Performance Level, up to d

Category 3

Note for 2-channel use and with suitable logic unit.

Mission time 20 Year(s)

### Mechanical data

Mechanical life, minimum 1,000,000 Operations

Actuating play in direction of actuation 5.5 mm

Holding force  $F_{Zh}$  in accordance with EN ISO 14119 2,000 N

Holding force  $F_{max}$ , maximum 2,600 N

Latching force 30 N

Positive break travel 10 mm

Positive break force per NC contact, minimum 10 N

Positive break force, minimum 30 N

Actuating speed, maximum 2 m/s

Mounting Screws

Type of the fixing screws 3x M5

Type of the screw head Flat head screw

### Mechanical data - Connection technique

Cable entry 4 x M16 x 1,5

Termination	Screw terminals
Cable section, minimum	0.25 mm <sup>2</sup>
Cable section, maximum	1.5 mm <sup>2</sup>
Note	All indications including the conductor ferrules.
Allowed type of cable	solid single-wire solid multi-wire flexible

### Mechanical data - Dimensions

Length of sensor	30 mm
Width of sensor	130 mm
Height of sensor	90 mm

### Ambient conditions

Degree of protection	IP67
Ambient temperature	-30 ... +60 °C
Storage and transport temperature	-30 ... +85 °C
Note (Relative humidity)	non-condensing non-icing
Protection class	II
Permissible installation altitude above sea level, maximum	2,000 m

### Ambient conditions - Insulation values

Rated insulation voltage U <sub>i</sub>	250 VAC
Rated impulse withstand voltage U <sub>imp</sub>	4 kV

### Electrical data

Thermal test current	6 A
----------------------	-----

Rated control voltage	24 VAC/DC
Required rated short-circuit current	1,000 A
Electrical power consumption, maximum	10 W
Switching element	NO contact, NC contact
Switching principle	slow action, positive break NC contact
Maximum switching frequency	1,000 /h
Material of the contacts, electrical	Silver

### Electrical data - Magnet control

Magnet switch-on time	100 %
Test pulse duration, maximum	5 ms
Test pulse interval, minimum	50 ms

### Electrical data - Safety contacts

Voltage, Utilisation category AC-15	230 VAC
Current, Utilisation category AC-15	4 A
Voltage, Utilisation category DC-13	24 VDC
Current, Utilisation category DC-13	2.5 A

### Electrical data - Auxiliary contacts

Voltage, Utilisation category AC-15	230 VAC
Current, Utilisation category AC-15	4 A
Voltage, Utilisation category DC-13	24 VDC

Current, Utilisation category DC-13      2.5 A

## Other data

Note (applications)      sliding safety guard  
removable guard  
hinged safety guard

## Scope of delivery

Scope of delivery      Actuator must be ordered separately.

## Note

Note (General)      Interlocks with the power to lock principle may only be used in special cases after a thorough evaluation of the accident risk, since the guarding device can immediately be opened on failure of the electrical power supply or when the main switch is opened.

Note (Manual release)      For maintenance, installation, etc.  
For manual release using M5 triangular key, available as accessory

## Ordering code

Product type description:  
AZM161 (1)-(2)(3)K(4)-(5)/(6)-(7)(8)

(1)

---

<b>SK</b>	Screw connection
<b>CC</b>	Cage clamps
<b>ST</b>	Connector plug M12

(2)

---

<b>11/03</b>	Magnet: 1 NO contact, 1 NC contact / Actuator: 3 NC contacts with connector plug
<b>12/03</b>	Magnet: 1 NO contact, 2 NC contact / Actuator: 3 NC contacts
<b>12/11</b>	Magnet: 1 NO contact, 2 NC contacts / Actuator: 1 NO contact, 1 NC contact with connector plug

<b>11/12</b>	Magnet: 1 NO contact, 1 NC contacts / Actuator: 1 NO contact, 2 NC contact with connector plug
<b>12/12</b>	Magnet: 1 NO contact, 2 NC contacts / Actuator: 1 NO contact, 2 NC contacts
(3)	
<b>without</b>	Latching force 5 N
<b>R</b>	Latching force 30 N
(4)	
<b>without</b>	Power to unlock
<b>A</b>	Power to lock
(5)	
<b>without</b>	Lateral manual release
<b>ED</b>	Manual release on the cover side
<b>EU</b>	Manual release on the back side
(6)	
<b>T</b>	Lateral emergency exit
<b>TD</b>	Emergency exit on the cover side
<b>TU</b>	Emergency exit on the back side
<b>N</b>	Emergency release
(7)	
<b>024</b>	Us: 24 VAC/DC
<b>110/230</b>	Us: 110/230 VAC
(8)	
<b>without</b>	without LED
<b>G</b>	with LED (only for Us: 24 VAC/DC)

## Pictures

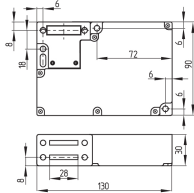
**Product picture (catalogue individual photo)**



ID: kazm1f03

| 256.6 kB | .tif | 75.671 x 56.885 mm - 286 x 215 px - 96 dpi  
 | 698.5 kB | .jpg | 352.778 x 265.289 mm - 1000 x 752 px - 72 dpi  
 | 36.6 kB | .png | 74.083 x 55.739 mm - 210 x 158 px - 72 dpi  
 | 61.5 kB | .jpg | 123.472 x 92.781 mm - 350 x 263 px - 72 dpi

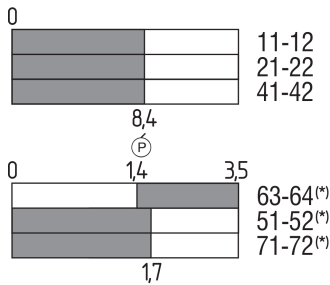
### Dimensional drawing basic component



ID: lazm1g09

| 8.1 kB | .swf |  
 | 3.6 kB | .png | 74.083 x 52.211 mm - 210 x 148 px - 72 dpi  
 | 75.8 kB | .jpg | 352.778 x 248.003 mm - 1000 x 703 px - 72 dpi

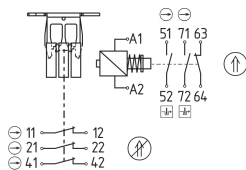
### Switch travel diagram



ID: kazm1s18

| 2.1 kB | .png | 74.083 x 67.028 mm - 210 x 190 px - 72 dpi  
 | 103.7 kB | .jpg | 352.778 x 318.558 mm - 1000 x 903 px - 72 dpi

### Diagram

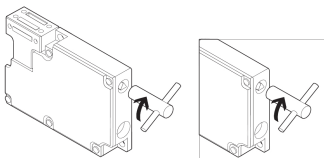


ID: kazm1k98

| 81.9 kB | .ai | 297 x 210.002 mm - 841 x 595 px - 72 dpi  
 | 113.5 kB | .jpg | 352.778 x 227.542 mm - 1000 x 645 px - 72 dpi  
 | 4.9 kB | .png | 74.083 x 47.978 mm - 210 x 136 px - 72 dpi

11	12	21	22	41	42	51	52	63	64	71	72	A1	A2
----	----	----	----	----	----	----	----	----	----	----	----	----	----

### Operating principle



ID: kazm1a41

| 105.3 kB | .jpg | 352.778 x 170.744 mm - 1000 x 484 px - 72 dpi  
 | 13.0 kB | .png | 74.083 x 35.983 mm - 210 x 102 px - 72 dpi

Schmersal India Pvt. Ltd., Plot No - G-7/1, Ranjangaon MIDC, Tal. - Shirur, Dist.- Pune 412 220

The details and data referred to have been carefully checked. Images may diverge from original. Further technical data can be found in the manual. Technical amendments and errors possible.



Generated on: 19/08/2024, 5:19 am